

Keysight N1900 Series Physical Layer Test Systems

N1930B Physical Layer Test System Software
which supports VNA-Based and TDR-Based
Physical Layer Test System Hardware

NOTICE: This document contains references to Agilent Technologies. Agilent's former Test and Measurement business has become Keysight Technologies. For more information, go to www.keysight.com.



WARRANTY STATEMENT

THE MATERIAL CONTAINED IN THIS DOCUMENT IS PROVIDED “AS IS,” AND IS SUBJECT TO BEING CHANGED, WITHOUT NOTICE, IN FUTURE EDITIONS. FURTHER, TO THE MAXIMUM EXTENT PERMITTED BY APPLICABLE LAW, KEYSIGHT DISCLAIMS ALL WARRANTIES, EITHER EXPRESS OR IMPLIED WITH REGARD TO THIS MANUAL AND ANY INFORMATION CONTAINED HEREIN, INCLUDING BUT NOT LIMITED TO THE IMPLIED WARRANTIES OF MERCHANTABILITY AND FITNESS FOR A PARTICULAR PURPOSE. KEYSIGHT SHALL NOT BE LIABLE FOR ERRORS OR FOR INCIDENTAL OR CONSEQUENTIAL DAMAGES IN CONNECTION WITH THE FURNISHING, USE, OR PERFORMANCE OF THIS DOCUMENT OR ANY INFORMATION CONTAINED HEREIN. SHOULD KEYSIGHT AND THE USER HAVE A SEPARATE WRITTEN AGREEMENT WITH WARRANTY TERMS COVERING THE MATERIAL IN THIS DOCUMENT THAT CONFLICT WITH THESE TERMS, THE WARRANTY TERMS IN THE SEPARATE AGREEMENT WILL CONTROL.

DFARS/Restricted Rights Notice

If software is for use in the performance of a U.S. Government prime contract or subcontract, Software is delivered and licensed as “Commercial computer software” as defined in DFAR 252.227-7014 (June 1995), or as a “commercial item” as defined in FAR 2.101(a) or as “Restricted computer software” as defined in FAR 52.227-19 (June 1987) or any equivalent agency regulation or contract clause. Use, duplication or disclosure of Software is subject to Keysight Technologies’ standard commercial license terms, and non-DOD Departments and Agencies of the U.S. Government will receive no greater than Restricted Rights as defined in FAR 52.227-19(c)(1-2) (June 1987). U.S. Government users will receive no greater than Limited Rights as defined in FAR 52.227-14 (June 1987) or DFAR 252.227-7015 (b)(2) (November 1995), as applicable in any technical data.

Assistance

Product maintenance agreements and other customer assistance agreements are available for Keysight Technologies products. For information about these agreements and for other assistance, contact Keysight. Refer to [“Contacting Keysight” on page 88](#).

Safety and Regulatory Information

The safety and regulatory information pertaining to this product is located in [Chapter 5, “Safety and Regulatory Information,” on page 89](#).

Safety Notes

The following safety notes are used throughout this manual. Familiarize yourself with each of the notes and its meaning before operating this instrument. All pertinent safety notes for using this product are located in [Chapter 5, “Safety and Regulatory Information,” on page 89](#).

WARNING **Warning denotes a hazard. It calls attention to a procedure which, if not correctly performed or adhered to, could result in injury or loss of life. Do not proceed beyond a warning note until the indicated conditions are fully understood and met.**

CAUTION Caution denotes a hazard. It calls attention to a procedure that, if not correctly performed or adhered to, could result in damage to or destruction of the instrument. Do not proceed beyond a caution sign until the indicated conditions are fully understood and met.

Documentation Map



The online Help files are in the PLTS software, offering quick reference to user documentation. Click **Help** on the menu bar.



This *Installation Guide* helps you to with PLTS software and hardware installation.

PLTS Documentation Online

All PLTS documentation, including the very latest online version of the PLTS Help file, can be found at: <http://na.support.keysight.com/plts/help>

.
.

1. Installing the VNA-Based Physical Layer Test System Hardware	1
Step 1. Set Up the Personal Computer	3
Step 2. Verify your System Shipment	4
Step 3. Set Up the Network Analyzer	7
Step 4. Attach the Network Analyzer to the Test Set	8
Preparing the Network Analyzer.	8
Preparing the Test Set	9
Attaching the Network Analyzer to the Test Set	9
Step 5. Install the Test System on a Bench Top or in an Equipment Rack	11
To Install on a Bench Top	12
To Install in an Equipment Rack	13
Step 6. Make the Interconnections between the S-Parameter Test Set and the Network Analyzer.	17
N1957B Test System Interconnections	20
N1955B Test System Interconnections	22
N1935A and N1953B Test System Interconnections	24
Step 7. Set up PC to PLTS Communication	26
Step 8. Power up the S-Parameter Test Set	30
2. Installing the TDR-Based Physical Layer Test System Hardware	33
Step 1. Set Up the Personal Computer	36
Step 2. Set up the TDR System.	37
Step 3. Set Up the General Purpose Interface Bus (GPIB).	39
Step 4. Power up the TDR System	40
3. Installing the PLTS Software	41
Step 1. Install or Upgrade PLTS Software	43
Step 2. License the Physical Layer Test System Software	46
Setting Up the Fixed (Node-locked) License	47
Setting Up the Networkable (Floating) License	50
Setting Up the Transportable (USB Key) License	57
Step 3. Start the Physical Layer Test System Software	59
4. Troubleshooting	63
Electrostatic Discharge	64
PLTS Installation Troubleshooting	65
Connection Manager working with .NET and the T&M Toolkit.	66
PLTS does not recognize the Keysight USB to GPIB adapter.	66

Contents

Other Keysight USB to GPIB Adapter Problems	67
Problems with the VISA Layer	68
Problems with VISA COM (SOAP Error)	68
Problems with using National Instruments I/O Devices	71
I/O Troubleshooting Steps	72
Missing Microsoft Component	79
XP Firewall Blocks Keysight Connection Manager	79
Plots Not Drawing or Refreshing Correctly	80
PLTS Hardware Troubleshooting	81
Troubleshooting PLTS Using a Tektronix CSA8000 or TDS8000	82
Contacting Keysight	88
5. Safety and Regulatory Information	89
Safety Information	90
Safety Symbols	90
Instrument Markings	91
Safety Considerations	93
Regulatory Information	96
Compliance with Canadian EMC Requirements	96
Compliance with German Noise Requirements	96
Declaration of Conformity	96

1 Installing the VNA-Based Physical Layer Test System Hardware

Installing the VNA-Based Physical Layer Test System Hardware

The Physical Layer Test System (PLTS) consists of the following items:

- Personal computer (PC)
- VNA-based system (Network analyzer and S-parameter test set)
- PLTS software

The installation procedure in this chapter will lead you through setting up the hardware (the PC and the VNA-based system). After that is complete, you will refer to [Chapter 3, Installing the PLTS Software](#), to install the software.

NOTE If you have the TDR-based PLTS system, refer to [Chapter 2, “Installing the TDR-Based Physical Layer Test System Hardware,”](#) on page 33 for instructions on setting up that system.

This installation procedure will lead you through a series of steps to set up your PLTS hardware. The following is a list of the installation steps:

- Step 1. Set Up the Personal Computer
- Step 2. Verify your System Shipment
- Step 3. Set Up the Network Analyzer
- Step 4. Attach the Test Set to the Network Analyzer (N4420B or N4464A/B Test Set Only)
- Step 5. Install the S-Parameter Test Set on a Bench Top or in an Equipment Rack
- Step 6. Make the Interconnections between the S-Parameter Test Set and the Network Analyzer
- Step 7. Set Up the General Purpose Interface Bus (GPIB)
- Step 8. Power up the Physical Layer Test System

NOTE These installation instructions were written specifically for customers who have just received their PLTS. If you have already been using our S-parameter test set and its corresponding network analyzer, you have probably completed most of these installation steps. Review these installation steps to ensure that your system is currently set up as recommended. Then, begin the software installation process by starting at [Chapter 3, “Installing the PLTS Software,”](#) on page 41.

Step 1. Set Up the Personal Computer

1. Make sure that your PC meets the following minimum system controller requirements:

Table 1-1 Minimum PC Requirements by PLTS Modes of Operation

PC Requirement	Measurement Mode ONLY	Off-Line Analysis Mode
	In the lab, controlling test equipment and making quick analysis of the results.	In your office, performing “What if...” analysis, characterization, cross-domain analysis, filtering, waveform math, and eye diagram simulation
CPU	1 GHz	2 GHz
Main Memory	512 MB ^a	1 GB
Virtual Memory^b	1 GB	1.5 GB
GPIB Interface	Keysight 82357A USB/GPIB Interface for Windows or supported GPIB card (any National Instruments or Keysight 82340/41 or 82350 GPIB card)	No GPIB connection is required to utilize PLTS in the off-line mode. Saved (stored) measurement files can be recalled at any time for analysis.
Operating Systems	Windows XP SP2, or Vista 32 SP1 ^c	Windows XP SP2, or Vista 32 and Vista 64 SP1
Screen Resolution	1024 × 768	
Display Colors	High Color (16 Bit) or greater	

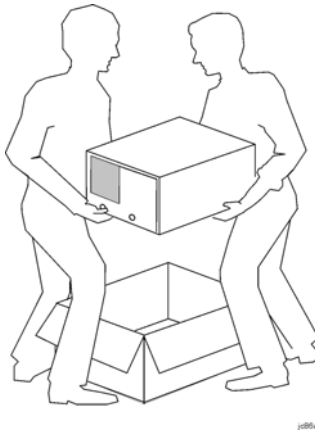
- a. 1 GB of Main Memory is recommended for the Measurement Mode when measuring 16,000 points with the PNA B-model network analyzer.
- b. As a general rule for optimum PC performance when using PLTS, virtual memory should be 1.5 to 2 times the size of the main memory.
- c. Earlier versions of Windows are no longer supported by PLTS.

2. Using the PC documentation, make sure that the PC is operating properly.
3. Make sure the GPIB card is installed in the PC and that it is operating properly.
4. Make sure the PC is located near where you will position the Physical Layer Test System (PLTS). Later in this process, you will connect the GPIB card to the PLTS using a GPIB cable.

Step 2. Verify your System Shipment

Step 2. Verify your System Shipment

1. Unpack your system from the containers in which it was shipped.



WARNING The test system hardware is heavy. Use proper lifting techniques. The network analyzer can weigh between 53 lb. (24 kg) and 64 lb. (29 kg). The test set can weigh as much as 20 lb. (9 kg).

2. Carefully inspect the system hardware to make sure that it was not damaged during shipment.

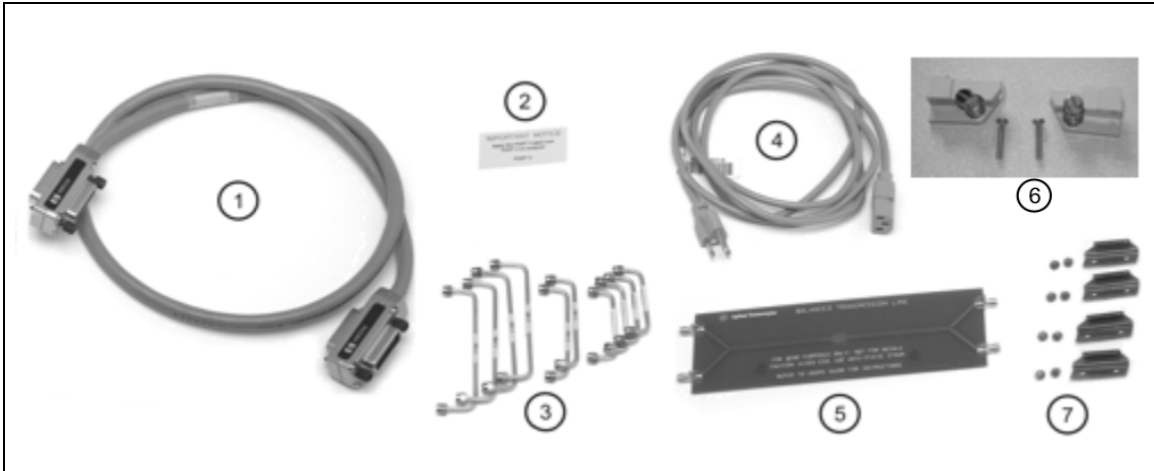
NOTE If your test system was damaged during shipment, contact Keysight Technologies. Refer to “[Contacting Keysight](#)” on page 88.

3. Verify that your test set is compatible with your network analyzer and its installed options. To see supported test sets and network analyzers, visit www.keysight.com/find/plts. If the installed options are not compatible, contact us before proceeding. Refer to “[Contacting Keysight](#)” on page 88.

Note: Support for most ECal modules requires PNA firmware revision 4.83. Type “ECal” in the PLTS online help index for more information.

Step 2. Verify your System Shipment

4. Check the accessories that were shipped with your system. Your network analyzer accessories will be checked during the network analyzer setup.



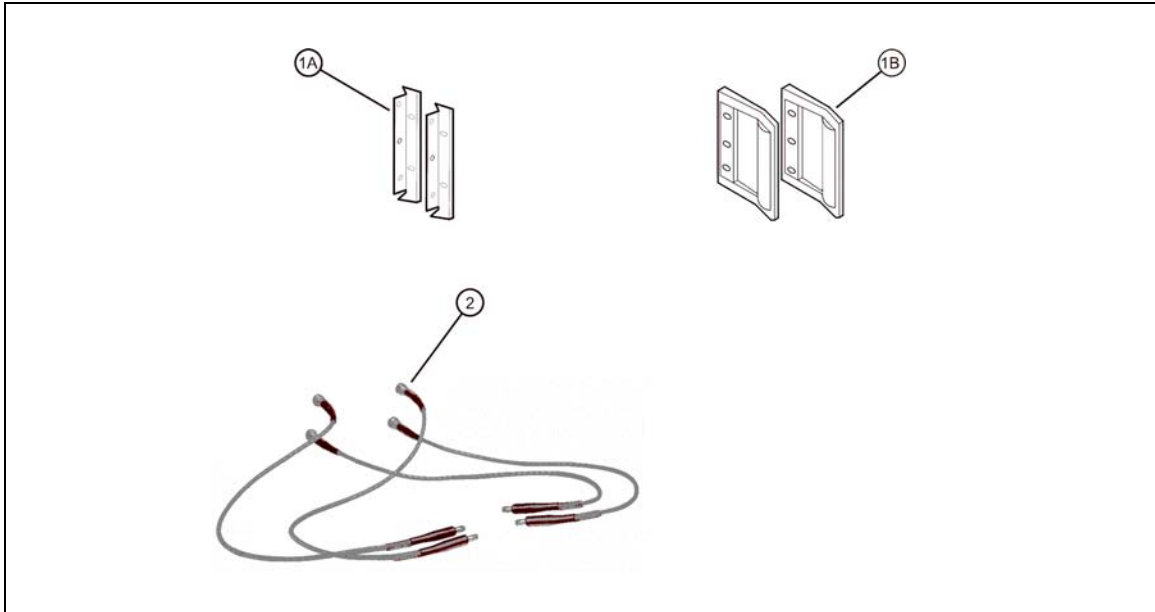
Item Nr	Part Number	Part Description
1	8120-3445	GPIB Cable (3 feet)
2	N/A	“Port 3” Label
3	Varies by Test Set Model and Option	Semirigid interconnect cables (refer to Step 6. Make the Interconnections between the S-Parameter Test Set and the Network Analyzer for the appropriate number of cables)
4	Unique to country	AC Power Cord (for the test set)
5	AD00658	Balanced Transmission Line PC Board Device (Sample DUT)
6	5023-0132	2 Rear Locking Feet with captive screws (N4420B, N4421A/B only) (With 2 Screws)
7	5063-9253	4 Lock Links (N4420B, N4421A/B only) with 8 screws (0515-1499)

To order a kit that contains items 6 and 7, use part number N4421-60001.

Installing the VNA-Based Physical Layer Test System Hardware

Step 2. Verify your System Shipment

5. If you ordered any of the following options, check the parts. Option 1CP is shipped in a separate container.

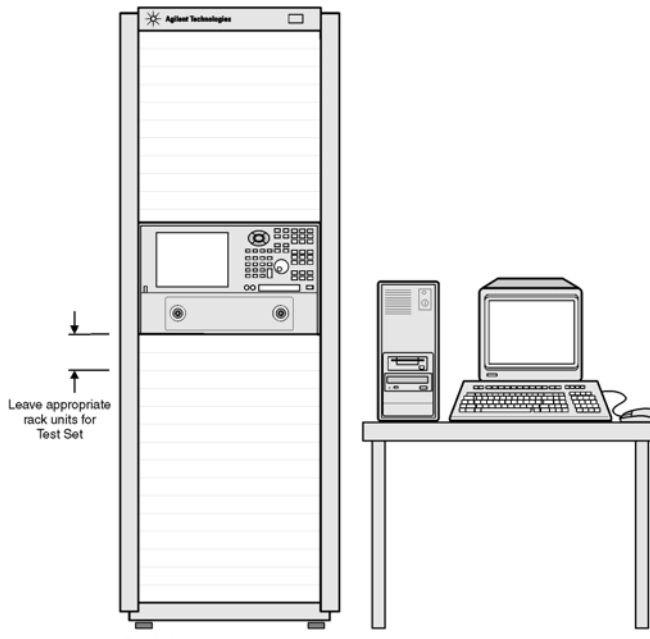


Option Number	Item Number	Part Description
1CP	1A 1B	Rack mount flange kit (For use with handles) Handles (set of 2)
B20	2	Precision 50-ohm cables (4)
Other Calibration Kits		
N/A	Not Shown	85033E 3.5mm Calibration Kit (0 Hz (dc) - 9 GHz) ¹ 85052D 3.5mm Economy Calibration Kit (0 Hz (dc) - 26.5 GHz) ¹ 85056A 2.4mm Precision Calibration Kit (0 Hz (dc) - 50 GHz) ¹ 85050C 7 mm Precision Calibration Kit (0 Hz (dc) - 18 GHz) ²

¹ Kit for SOLT Calibration; ² Kit for TRL Calibration

Step 3. Set Up the Network Analyzer

1. Using the network analyzer's Installation and Quick Start Guide, set up the network analyzer.
2. If you are installing your network analyzer in an equipment rack, be sure to leave at least 2 rack units of space *below* the analyzer to install the test set.



NOTE

For the N4420B or N4421A/B test set, connect the network analyzer to the test set before placing in the rack as a single unit on one set of rails. Refer to [“Step 4. Attach the Network Analyzer to the Test Set”](#) on page 8 for instructions.

Step 4. Attach the Network Analyzer to the Test Set

**Step 4. Attach the Network Analyzer to the Test Set
(N4420B or N4421A/B Test Set Only)**

If your test set is *not* an N4420B, an N4421A, or an N4421B, continue with “[Step 5. Install the Test System on a Bench Top or in an Equipment Rack](#)” on page 11.

The compatible network analyzers are attached to the N4420B and N4421A/B test sets using lock links at the front and locking feet at the rear. This hardware is supplied with the test set. Other network analyzers are *not* attached to test sets (N4415A, N4416A, N4417A, N4418A, and N4419A/B) using this hardware.

Preparing the Network Analyzer

1. Remove the four feet from the bottom of the network analyzer.

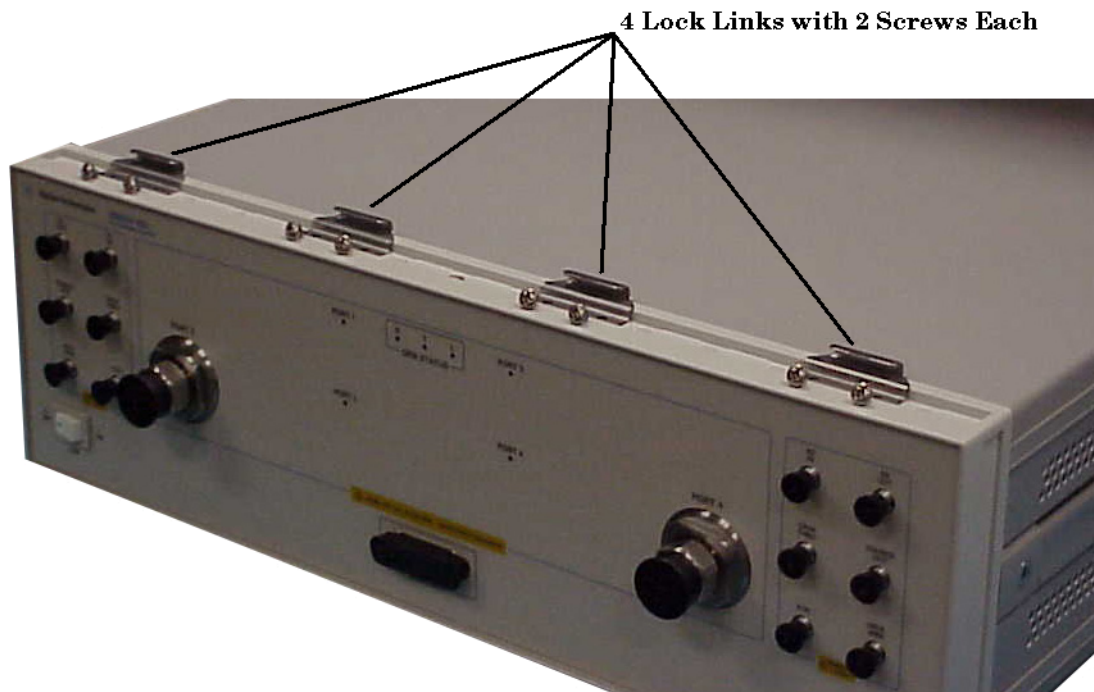


2. Remove the screws from the two lower rear panel standoffs.
3. Install the two rear locking feet where the standoffs were removed. Part number 5023-0132 includes two pieces which are NOT interchangeable.. One piece is for the right side and the other for the left side. The locking feet may require GENTLE tapping with a hammer to seat properly. Use the two longer screws to secure the feet to the analyzer. Do NOT tighten the screws.

Preparing the Test Set

4. Remove the trim strip from the top of the front frame.
5. Install the four lock links to the top of the front frame using eight screws.

Lock Link Installation

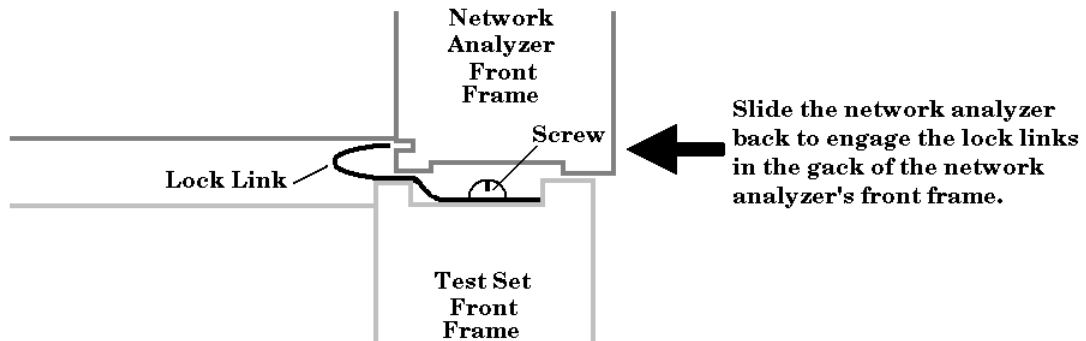


Attaching the Network Analyzer to the Test Set

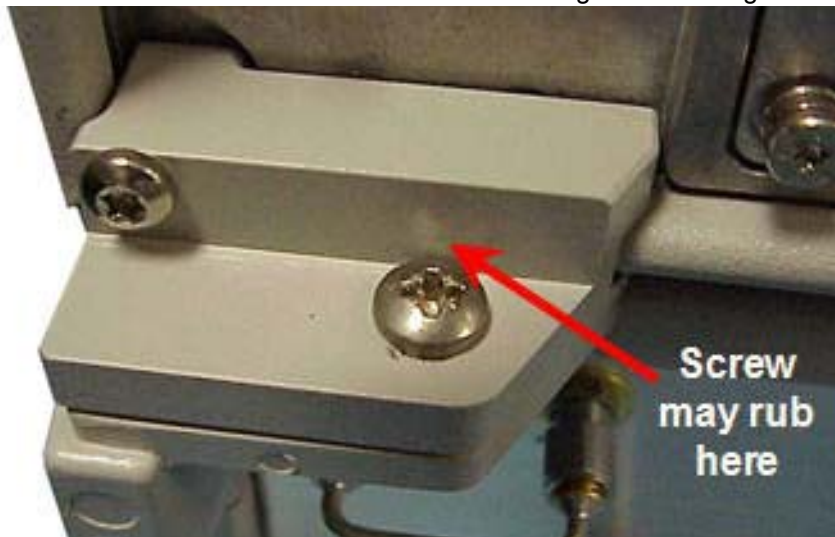
6. Place the network analyzer on top of the test set ensuring that the front frame of the network analyzer is positioned slightly forward of the lock links that are attached to the the test set. Then slide the network analyzer back so the lock links engage the front frame of the analyzer.

Step 4. Attach the Network Analyzer to the Test Set

Making the Lock Link Connection



7. Secure the network analyzer's lower locking feet to the test set's upper locking feet by inserting the shorter two screws between the two pairs of locking feet, one on each side of the instrument as shown below. **NOTE:** The screw may rub against the locking feet attached to the analyzer. This is normal and does not detract from the strength of the fitting.



NOTE If the screw holes are not aligned, loosen the screws that secure the feet to both the network analyzer and the test set to align the screw holes.

8. Tighten all screws.

Step 5. Install the Test System on a Bench Top or in an Equipment Rack

The test system can be installed on a bench top or in an equipment rack.

In all installations, consider the following ventilation requirements when deciding where to set up your test system.

CAUTION Ventilation Requirements:

When installing the product in a cabinet, the convection into and out of the product must not be restricted. The ambient temperature (outside the cabinet) must be less than the maximum operating temperature of the instrument by 4 °C for every 100 watts dissipated in the cabinet. If the total power dissipated in the cabinet is greater than 800 watts, then forced convection must be used.

Refer to the section that applies to your installation.

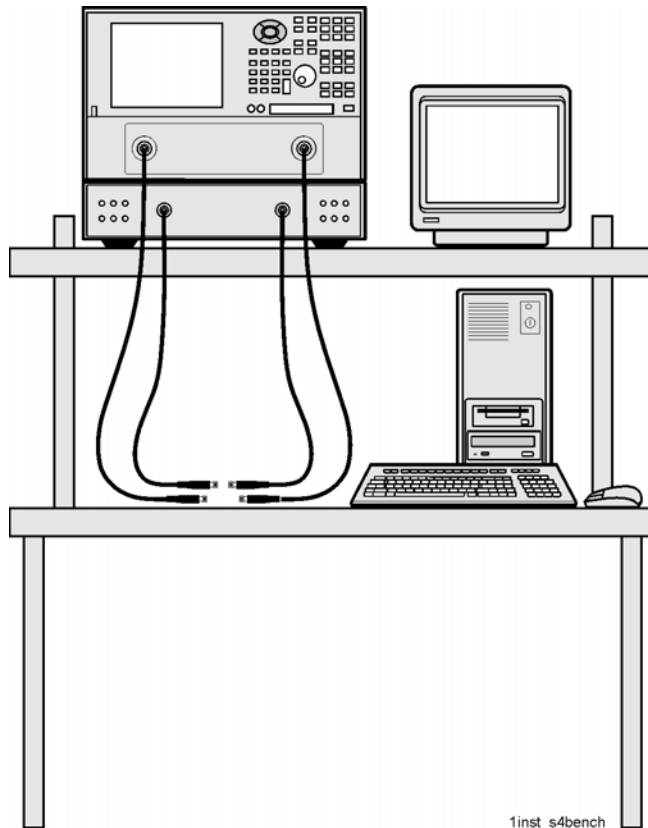
- **For bench top installation**, continue on [page 12](#).
- **For equipment rack installation**, continue on [page 13](#).

Step 5. Install the Test System on a Bench Top or in an Equipment Rack

To Install on a Bench Top

1. Place the test set and the network analyzer on a bench top. In the example illustration shown below, the system is placed on a riser as an alternative to the bench top. Make sure that there is at least four inches of clearance on the sides and back of the system for adequate ventilation.

The front panel test cables are shown only as a reminder to make sure they can easily reach the test surface of the bench.



CAUTION Consider the ventilation requirement described on [page 11](#) when selecting the location of your system.

2. Continue with [“Step 6. Make the Interconnections between the S-Parameter Test Set and the Network Analyzer”](#) on [page 17](#).

Installing the VNA-Based Physical Layer Test System Hardware
Step 5. Install the Test System on a Bench Top or in an Equipment Rack

To Install in an Equipment Rack

You may install the PLTS in an equipment rack in one of following two ways:

Removing Feet from VNA	Leaving Feet attached to VNA
<ol style="list-style-type: none"> 1. Install one set of rails into the equipment rack 2. Remove feet from Test Set and VNA 3. Attach mount flanges and the handles to Test Set 4. Attach mount flanges and the handles to VNA 5. Insert test set on rails in equipment rack and screw to rack 6. Place VNA on top of test set and screw VNA into rack 7. Bend Semi rigid interconnect cables to fit between the test set connector and the VNA connector 8. Connect semirigid between test set and VNA 	<ol style="list-style-type: none"> 1. Install one set of rails into the equipment rack 2. Remove feet from Test Set only 3. Attach mount flanges and the handles to Test Set 4. Attach mount flanges and the handles to VNA 5. Insert test set on rails in equipment rack and screw to rack 6. Place VNA on top of test set 7. Connect semirigid between test set and VNA

When you install the test set in an equipment rack, you will install rails in the rack to support the weight of the test set, attach the handles and the rack mount flanges to the test set, and secure the test set to the equipment rack.

1. Ensure that the front handle kit, the rack mount flange kit, and the rack mount rail set are complete.

Handle Kit Contents	Flange Kit Contents
<ul style="list-style-type: none"> • 4 Screws • 2 Side Trim Strip • 2 Handles • Installation Instructions 	<ul style="list-style-type: none"> • 4 Screws (Long) • 4 Screws with Washers • 4 Nuts with Metal Clips • 2 Flanges • Installation Instructions

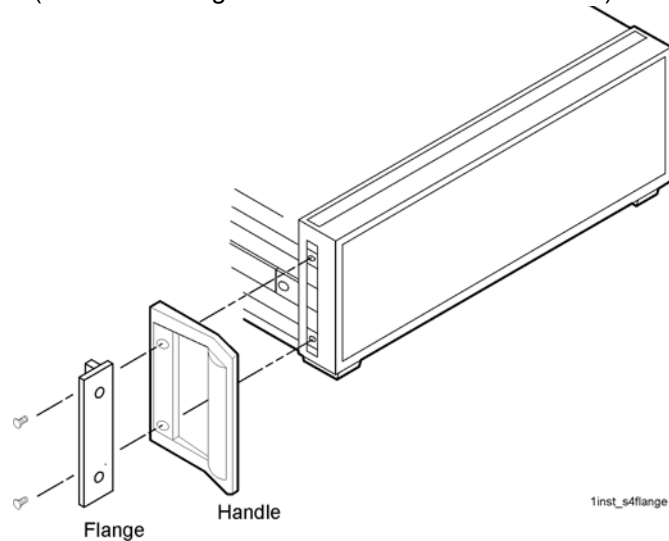
NOTE If any items are damaged or missing from a kit, contact us (refer to **“Contacting Keysight” on page 88**) to order a replacement kit. Items within these kits are not individually available.

Step 5. Install the Test System on a Bench Top or in an Equipment Rack

2. Install the rails into the equipment rack using the instructions provided. Consider that the test set is two rack units high (3.5 inches). Mount the test set immediately below the network analyzer.

NOTE For the N4420B, N4421A, or N4421B test set, connect the network analyzer to the test set before placing in the rack as a single unit on one set of rails.

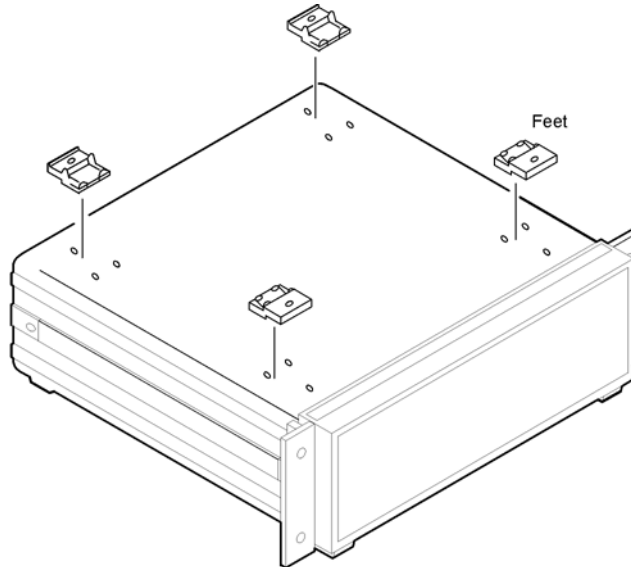
3. Attach the cabinet mount flanges and the handles to the sides of the front panel, using two long screws per side. (Attach the flanges to the outside of the handles.)



WARNING If an instrument handle is damaged, you should replace it immediately. Damaged handles can break while you are moving or lifting the instrument and cause personal injury or damage to the instrument.

Installing the VNA-Based Physical Layer Test System Hardware
Step 5. Install the Test System on a Bench Top or in an Equipment Rack

4. Remove the feet before cabinet mounting the analyzer using the directions imprinted on the feet.



jc814a

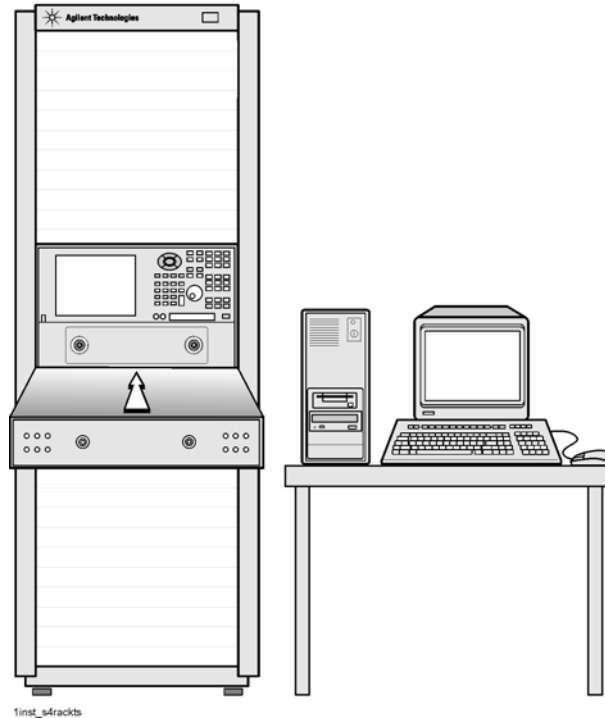
5. Ensure there is adequate clearance between the system cabinet and the sides and back of the test system for adequate ventilation.

CAUTION Consider the ventilation requirements described in “[Step 5. Install the Test System on a Bench Top or in an Equipment Rack](#)” on page 11 when selecting the location of your system.

Installing the VNA-Based Physical Layer Test System Hardware

Step 5. Install the Test System on a Bench Top or in an Equipment Rack

6. Lift the test set and slide it onto the rails that you installed earlier from the front of the equipment rack. Secure the test set to the equipment rack using the screws with washers and metal-clipped nuts provided in the flange kit.



7. Continue with “[Step 6. Make the Interconnections between the S-Parameter Test Set and the Network Analyzer](#)” on page 17.

Step 6. Make the Interconnections between the S-Parameter Test Set and the Network Analyzer

Step 6. Make the Interconnections between the S-Parameter Test Set and the Network Analyzer

1. Locate your system or test set and network analyzer on the following pages for information describing the interconnections between the test set and the network analyzer.

For interconnection information for the discontinued hardware models listed below, refer to PLTS online Help.

PLTS Systems: N1947A, N1948A, N1951A, N1953A, N1957A

PLTS Test Sets: N4415A, N4416A, N4417A, N4418A, N4419A, N4421A

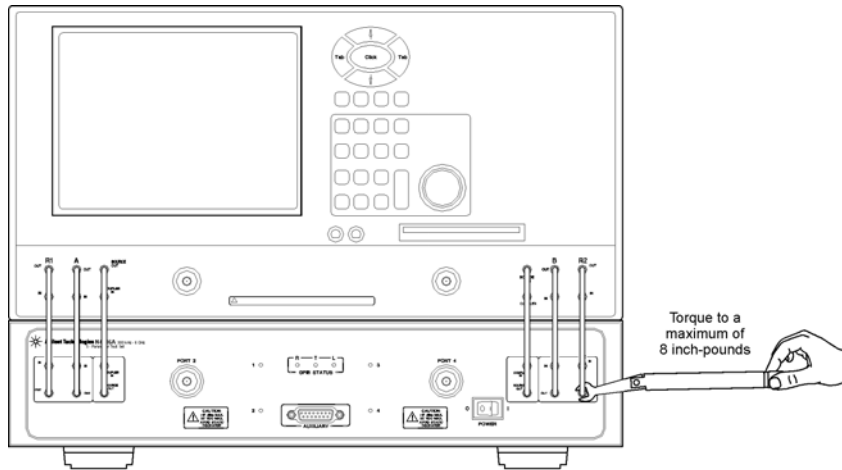
PLTS Network Analyzers: 8753ES, 8720ES/8722ES, E8356A/E8357A/E8358A, E8362A/E8363A/E8364A, E8801A/E8802A/E8803A

2. Using the illustration and table located on the page referenced above in step 1, connect the interconnect cables between the test set and the network analyzer. Torque the semirigid cable connectors to 8 inch-pounds.

NOTE The Reference channel path through the test set is used to compensate for electrically long DUTs. This also results in added loss in the Reference channel and higher trace noise. Therefore, unless making high-speed measurements of electrically-long devices, do NOT remove the PNA **REFERENCE 1** and **REFERENCE 2** front-panel loops, and do NOT use the Reference channel interconnect cables (items 1, 2, 3, 4, 13, and 14).

Installing the VNA-Based Physical Layer Test System Hardware

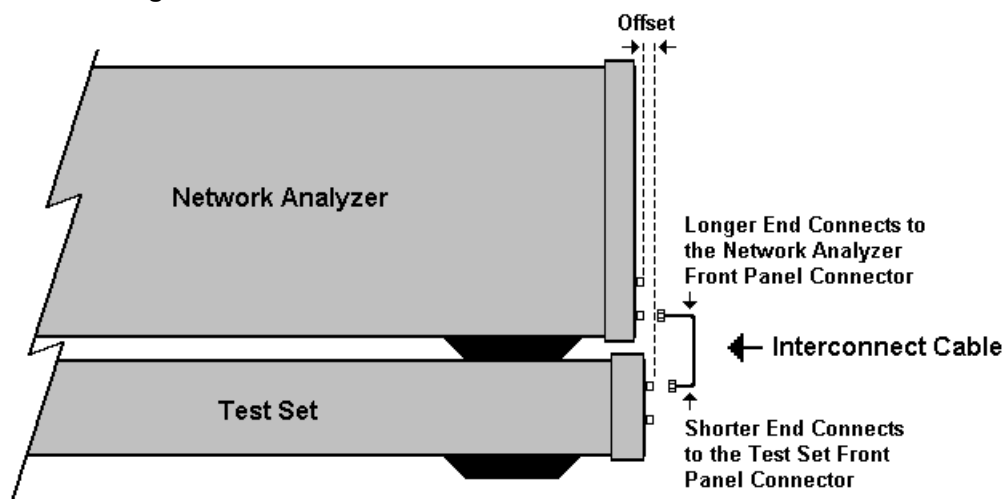
Step 6. Make the Interconnections between the S-Parameter Test Set and the Network Analyzer



1inst_s5icon

Step 6. Make the Interconnections between the S-Parameter Test Set and the Network Analyzer

CAUTION When connecting the interconnect cables described in the remaining pages of this section, be careful to install the interconnect cables correctly. The longer end of the interconnect cable connects to the network analyzer front panel connector. Refer to [Figure 1-1](#) for the correct orientation.

Figure 1-1 Interconnect Cable Orientation

Damage to the interconnect cable can result from improper connection of the cable.

TIP If the test set and the network analyzer are rack mounted, the screws securing the rack mount flanges to the instrument rack may be loosened slightly to allow for minor repositioning of the instruments. Don't forget to retighten the screws when you are done.

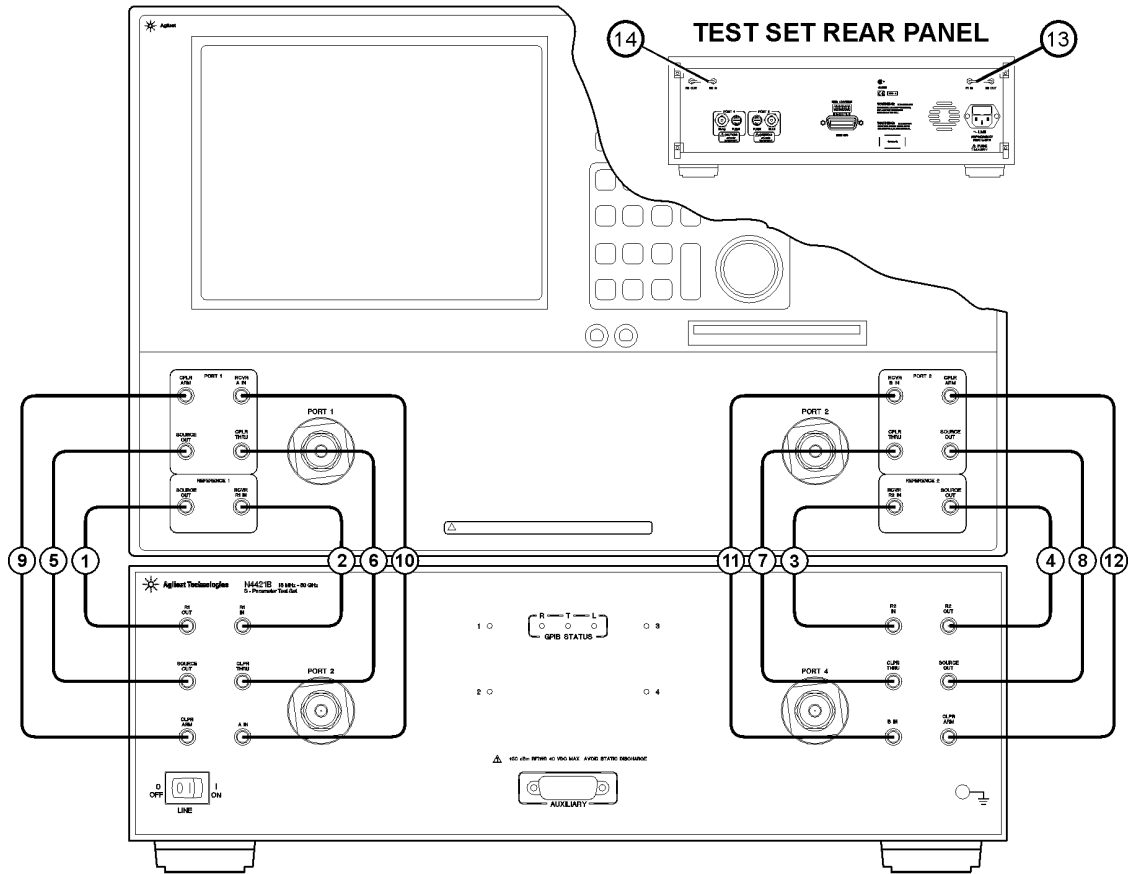
3. Continue with [“Step 7. Set up PC to PLTS Communication”](#) on page 26.

Installing the VNA-Based Physical Layer Test System Hardware

Step 6. Make the Interconnections between the S-Parameter Test Set and the Network Analyzer

N1957B Test System Interconnections

(N4421B Test Set with E8364B/C)



4421_connections

CAUTION Damage to the interconnect cable can result from improper orientation of the cable. Refer to [page 19](#) for detailed information regarding the correct cable orientation.

Step 6. Make the Interconnections between the S-Parameter Test Set and the Network Analyzer

Call Out Sequence	Cable Part Number	From Network Analyzer	To Test Set
1	Z5623-20215	REF 1 SOURCE OUT	REF 1 R1 OUT
2	Z5623-20215	REF 1 RCVR R1 IN	REF 1 RCVR R1 IN
3	Z5623-20215	REF 2 RCVR R2 IN	REF 2 RCVR R2 IN
4	Z5623-20215	REF 2 SOURCE OUT	REF 2 R2 OUT
5	Z5623-20216	PORT 1 SOURCE OUT	PORT 1 SOURCE OUT
6	Z5623-20216	PORT 1 CPLR THRU	PORT 1 CPLR THRU
7	Z5623-20216	PORT 2 CPLR THRU	PORT 2 CPLR THRU
8	Z5623-20216	PORT 2 SOURCE OUT	PORT 2 SOURCE OUT
9	Z5623-20217	PORT 1 CPLR ARM	PORT 1 CPLR ARM
10	Z5623-20217	PORT 1 RCVR A IN	PORT 1 RCVR A IN
11	Z5623-20217	PORT 2 RCVR B IN	PORT 2 RCVR B IN
12	Z5623-20217	PORT 2 CPLR ARM	PORT 2 CPLR ARM
13	E8364-20059	REF 1 on rear panel of the test set	
14	E8364-20059	REF 2 on rear panel of the test set	

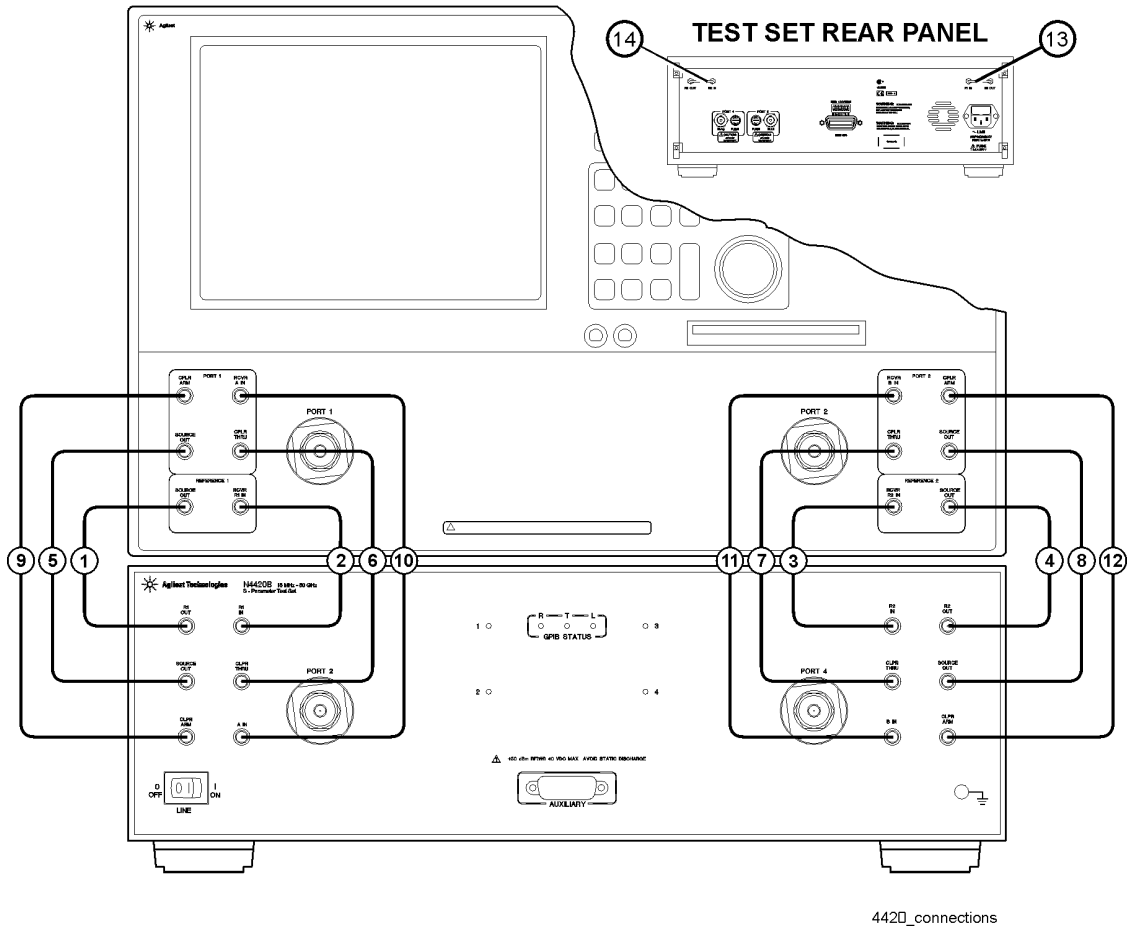
NOTE The Reference channel path through the test set is used to compensate for electrically long DUTs. This also results in added loss in the Reference channel and higher trace noise. Therefore, unless making high-speed measurements of electrically-long devices, do NOT remove the PNA **REFERENCE 1** and **REFERENCE 2** front-panel loops, and do NOT use the Reference channel interconnect cables (items 1, 2, 3, 4, 13, and 14).

Installing the VNA-Based Physical Layer Test System Hardware

Step 6. Make the Interconnections between the S-Parameter Test Set and the Network Analyzer

N1955B Test System Interconnections

(or N4420B Test Set with E8363B/C Network Analyzer)



CAUTION Damage to the interconnect cable can result from improper orientation of the cable. Refer to [page 19](#) for detailed information regarding the correct cable orientation.

Step 6. Make the Interconnections between the S-Parameter Test Set and the Network Analyzer

Call Out Sequence	Cable Part Number	From Network Analyzer	To Test Set
1	Z5623-20215	REF 1 SOURCE OUT	REF 1 R1 OUT
2	Z5623-20215	REF 1 RCVR R1 IN	REF 1 RCVR R1 IN
3	Z5623-20215	REF 2 RCVR R2 IN	REF 2 RCVR R2 IN
4	Z5623-20215	REF 2 SOURCE OUT	REF 2 R2 OUT
5	Z5623-20216	PORT 1 SOURCE OUT	PORT 1 SOURCE OUT
6	Z5623-20216	PORT 1 CPLR THRU	PORT 1 CPLR THRU
7	Z5623-20216	PORT 2 CPLR THRU	PORT 2 CPLR THRU
8	Z5623-20216	PORT 2 SOURCE OUT	PORT 2 SOURCE OUT
9	Z5623-20217	PORT 1 CPLR ARM	PORT 1 CPLR ARM
10	Z5623-20217	PORT 1 RCVR A IN	PORT 1 RCVR A IN
11	Z5623-20217	PORT 2 RCVR B IN	PORT 2 RCVR B IN
12	Z5623-20217	PORT 2 CPLR ARM	PORT 2 CPLR ARM
13	E8364-20059	REF 1 on rear panel of the test set	
14	E8364-20059	REF 2 on rear panel of the test set	

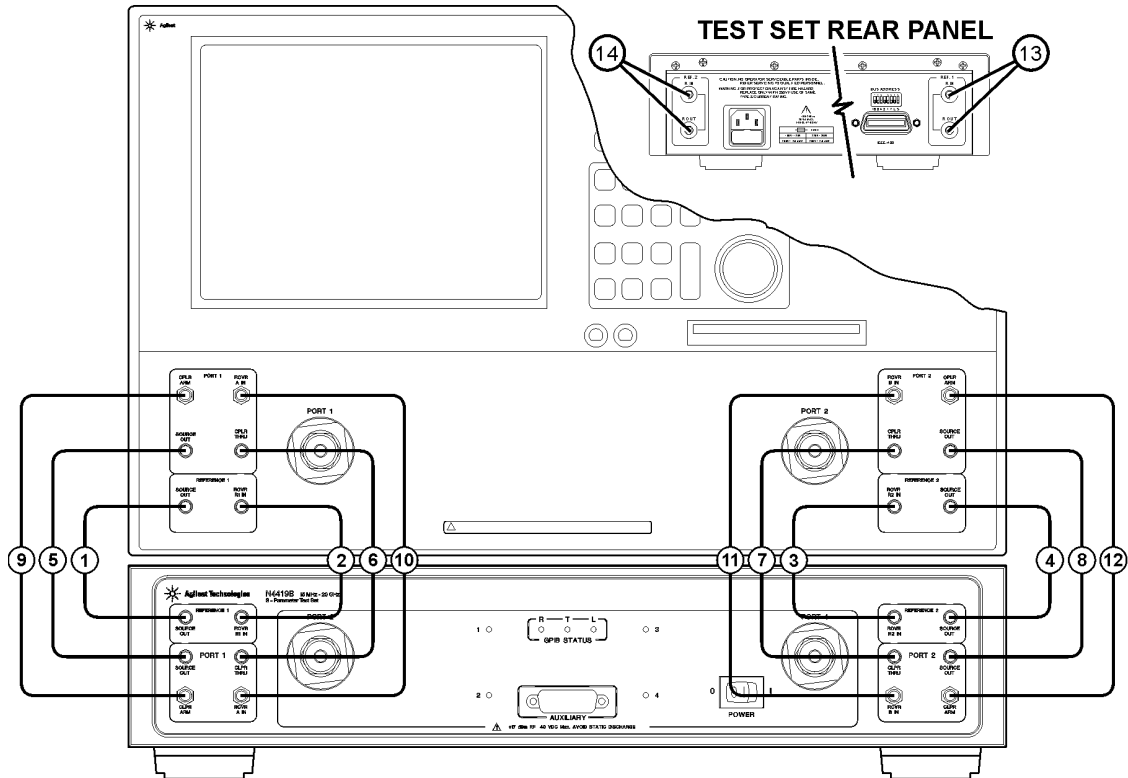
NOTE The Reference channel path through the test set is used to compensate for electrically long DUTs. This also results in added loss in the Reference channel and higher trace noise. Therefore, unless making high-speed measurements of electrically-long devices, do NOT remove the PNA **REFERENCE 1** and **REFERENCE 2** front-panel loops, and do NOT use the Reference channel interconnect cables (items 1, 2, 3, 4, 13, and 14).

Installing the VNA-Based Physical Layer Test System Hardware

Step 6. Make the Interconnections between the S-Parameter Test Set and the Network Analyzer

N1935A and N1953B Test System Interconnections

(or N4419B Test Set with E8362B/C or N5230A/C Option 225 Network Analyzer)



4419_connections

CAUTION Damage to the interconnect cable can result from improper orientation of the cable. Refer to [page 19](#) for detailed information regarding the correct cable orientation.

Step 6. Make the Interconnections between the S-Parameter Test Set and the Network Analyzer

Call Out Sequence	Cable Part Number	From Network Analyzer	To Test Set
1	AD00756-1	REF 1 SOURCE OUT	REF 1 SOURCE OUT
2	AD00756-1	REF 1 RCVR R1 IN	REF 1 RCVR R1 IN
3	AD00756-1	REF 2 RCVR R2 IN	REF 2 RCVR R2 IN
4	AD00756-1	REF 2 SOURCE OUT	REF 2 SOURCE OUT
5	AD00756-2	PORT 1 SOURCE OUT	PORT 1 SOURCE OUT
6	AD00756-2	PORT 1 CPLR THRU	PORT 1 CPLR THRU
7	AD00756-2	PORT 2 CPLR THRU	PORT 2 CPLR THRU
8	AD00756-2	PORT 2 SOURCE OUT	PORT 2 SOURCE OUT
9	AD00756-3	PORT 1 CPLR ARM	PORT 1 CPLR ARM
10	AD00756-3	PORT 1 RCVR A IN	PORT 1 RCVR A IN
11	AD00756-3	PORT 2 RCVR B IN	PORT 2 RCVR B IN
12	AD00756-3	PORT 2 CPLR ARM	PORT 2 CPLR ARM
13	AD00756-4	REF 1 on rear panel of the test set	
14	AD00756-4	REF 2 on rear panel of the test set	

NOTE The Reference channel path through the test set is used to compensate for electrically long DUTs. This also results in added loss in the Reference channel and higher trace noise. Therefore, unless making high-speed measurements of electrically-long devices, do NOT remove the PNA **REFERENCE 1** and **REFERENCE 2** front-panel loops, and do NOT use the Reference channel interconnect cables (items 1, 2, 3, 4, 13, and 14).

Step 7. Set up PC to PLTS Communication

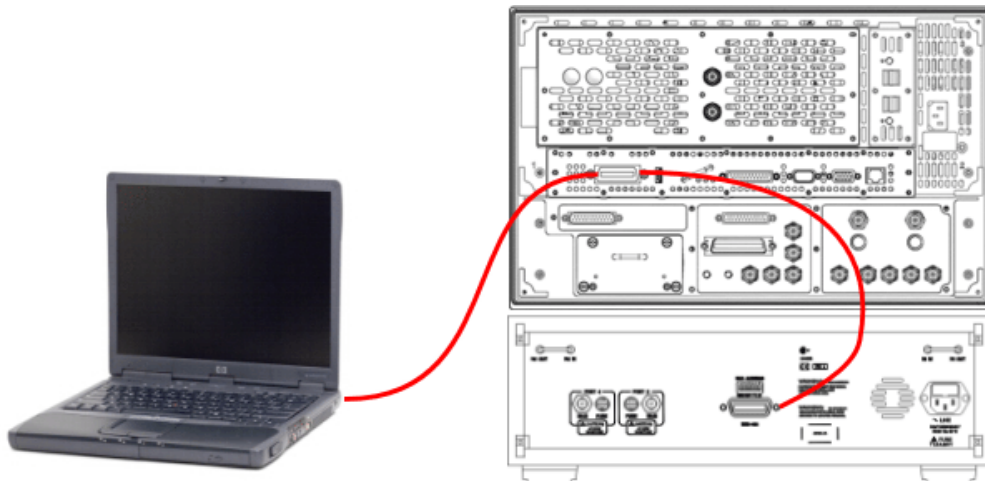
Step 7. Set up PC to PLTS Communication

Below are several different configurations depending on the following:

- Whether the PNA has a 500 MHz CPU (1 GPIB port) or 1.1 GHz CPU (2 GPIB ports)
- Whether the PNA has either Opt 550 or 551 installed or NOT. With Opt 550 or 551, which allows the PNA to automatically control the test set, calibrations are performed in the PNA, taking full advantage of the latest calibration features. See PLTS Help for more information on "Full Cal Mode".

When communication is established, the PLTS software will locate and identify your test system equipment automatically.

500 MHz CPU WITHOUT Opt 550/551 - Legacy Mode



1. Using a GPIB cable, connect the PNA GPIB port to the test set GPIB port.
2. Using a second GPIB cable, connect the PC to the same PNA GPIB port.
3. In the PNA SICL / GPIB / SCPI dialog, leave the GPIB in **Talker/Listener** mode.

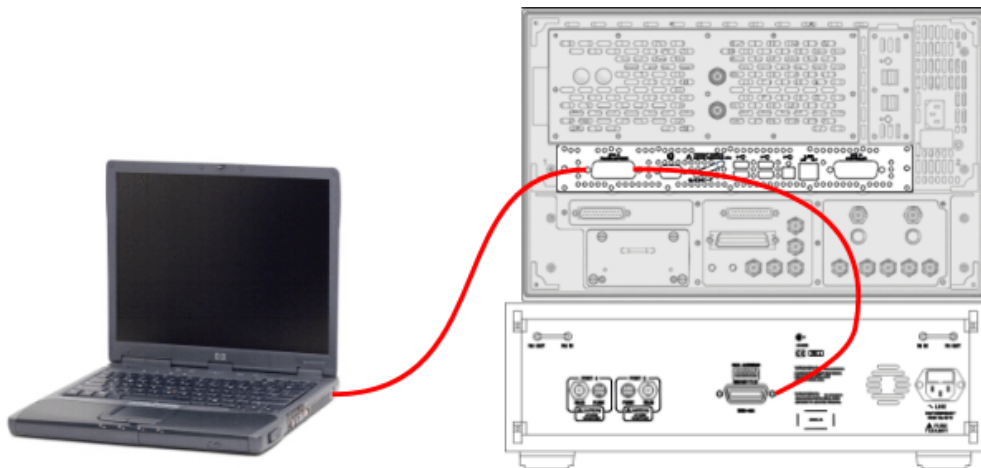
LAN can **NOT** be used in this configuration to control the PLTS system.

In this mode:

- Calibration is performed in PLTS software - NOT in the PNA - which limits the features which can be used.

- ONLY 4 ports allowed.

1.1 GHz CPU WITHOUT Opt 550/551 - Legacy Mode



1. Using a GPIB cable, connect the PNA GPIB **Talker/Listener** port to the test set GPIB port.
2. Using a second GPIB cable, connect the PC to the same PNA GPIB **Talker/Listener** port.

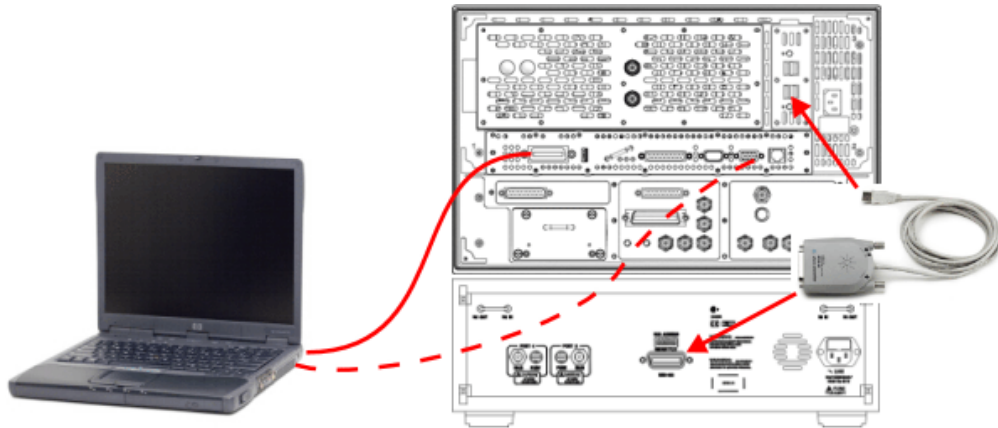
LAN can **NOT** be used in this configuration to control the PLTS system.

In this mode:

- Calibration is performed in PLTS software - NOT in the PNA - which limits the features which can be used.
- ONLY 4 ports allowed.

Step 7. Set up PC to PLTS Communication

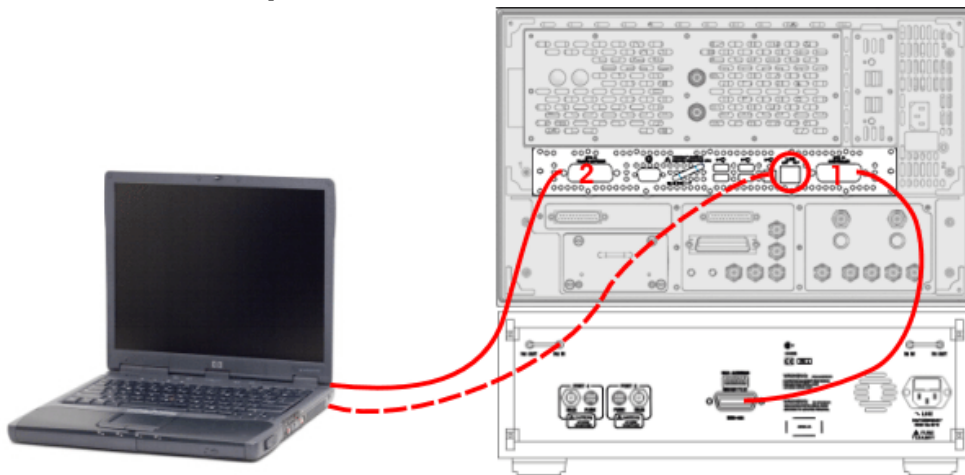
500 MHz CPU with Opt 550/551



1. Connect a 82357A/B to the PNA USB and to the test set GPIB port.
2. Using a GPIB cable, connect the PNA GPIB port to the PC for control of the system.

Or a LAN cable (dashed line) can be used in this configuration to control the PLTS system in either SICL-LAN, COM, or DCOM.

1.1 GHz CPU with Opt 550/551



1. Using a GPIB cable, connect the PNA System Controller GPIB port to the test set GPIB port.

Step 7. Set up PC to PLTS Communication

2. Using a second GPIB cable, connect the PNA Talker/Listener GPIB port to the PC for control of the system.

Or a LAN cable (dashed line) can be used in this configuration to control the PLTS system in either SICL-LAN, COM, or DCOM.

NOTE There are 31 GPIB addresses, numbered 0 to 30. However, there may be the occasion that you need to change the GPIB address for test equipment. GPIB addresses are set either using rear panel switches or using the equipment firmware. Refer to “Setting Up the General Purpose Interface Bus Manually” in the PLTS online help for more information.

Step 8. Power up the S-Parameter Test Set**Step 8. Power up the S-Parameter Test Set**

1. Ensure the available ac power supply meets the Power Source Requirements and the operating environment meets the Operating Environment Requirements listed below.

Power Source Requirements	
Input Voltage Range	100 - 120 Vac - or - 220 - 250 Vac
Frequency Range	47 - 62 Hz / 400 Hz
Power	40 VA maximum.
Operating Environment Requirements	
Operating Environment	Indoor use
Altitude	Operating: 0 to 2.0 km (6,560 ft.) Storage: 0 to 15.24 km (50,000 ft.)
Temperature	0 °C to 40 °C
Maximum Relative Humidity	80% for temperatures up to 31 °C; decreasing linearly to 50% for a temperature of 40 °C

Refer to [Chapter 5, “Specifications and Characteristics,”](#) for the complete specifications.

2. Verify that the ac power cable is not damaged, and that the power-source outlet provides a protective earth contact.

CAUTION Always use the three-prong ac power cord supplied with this product. Failure to ensure adequate earth grounding by not using this cord may cause product damage.

3. Turn off the PC and the network analyzer.
4. Connect the ac power cable from the power-source outlet to the ac input on the rear panel of the test set.
5. Turn on the PC, the network analyzer, and the test set by pressing the ON/OFF button on the front panel of each device.

NOTE Perform Step 6 ONLY when both of the following are true. Otherwise, skip to Step 7.

- * When using the Reference channel paths through the test set. See page 1-17 for more information.
- * When using a PNA model E8362A/B/C, E8363A/B/C, E8364A/B/C.

6. If your network analyzer is an E8362A/B, E8363A/B, or E8364A/B, you will need to perform the Phase-Lock IF Gain Adjustment after it has been connected to the test set. This routine adjusts the R Channel receivers ALC gain to ensure phase lock over the entire frequency range. Refer to **Phase-Lock IF Gain Adjustment** in the network analyzer's online help system for details. Use the following steps to perform this adjustment:

- a. On the PNA, from the **System** menu, click **Service**, then **Adjustments**, then **IF Gain Adjustment**.

If you are unable to find these selections on your E836XA PNA, your analyzer firmware is a revision prior to 3.0. Refer to the "IF Gain Adjustment" topic in the "Procedures" section of the PLTS online help for the adjustment procedure.

- b. Select any special test set options installed.
- c. No connections to the test ports are required.
- d. Click **Begin Adj.** The adjustment takes about a minute to complete.

The advanced screen is for factory personnel only.

NOTE This adjustment must be performed before using the network analyzer each time the system is assembled or disassembled.

7. The PLTS hardware installation is complete. Continue with the PLTS software installation by referring to [Chapter 3, "Installing the PLTS Software," on page 41](#).

Step 8. Power up the S-Parameter Test Set

2 Installing the TDR-Based Physical Layer Test System Hardware

Installing the TDR-Based Physical Layer Test System Hardware

To make time domain measurements using the Physical Layer Test System (PLTS) software and a TDR system, you need the following equipment:

- Personal computer (PC)
- PLTS software
- TDR-based PLTS hardware (one of the following systems)
 - Keysight 86100A/B/C Infiniium DCA Wide-Bandwidth Oscilloscope equipped with one or two 54754A Differential 18 GHz TDR/TDT Plug-in Modules using the following firmware revisions:
 - Keysight 86100A/B: Firmware Revision 03.06 or greater
 - Keysight 86100C: Firmware Revision 04.00 or greater
 - Tektronix CSA8000 Communications Signal Analyzer equipped with one or two 80E04 Dual Channel, 20 GHz TDR Sampling Modules using Firmware Revision 1.3.3 or greater
 - Tektronix TDS8000 Digital Sampling Oscilloscope equipped with one or two 80E04 Dual Channel, 20 GHz TDR Sampling Modules using Firmware Revision 1.3.3 or greater

Figure 2-1 TDR-based Physical Layer Test System Hardware: Tektronix CSA8000 (left) and Keysight 86100A/B/C DCA (right)



This installation procedure leads you through setting up the hardware (the PC and the TDR-based Physical Layer Test System). After you complete this installation, you will refer to [Chapter 3, Installing the PLTS Software](#), to install the software.

NOTE If you have the VNA-based Physical Layer Test System, refer to [Chapter 1, “Installing the VNA-Based Physical Layer Test System Hardware,”](#) on page 1 for instructions on setting up that system.

The following is a list of the installation steps to set up your TDR system hardware:

- Step 1. Set Up the Personal Computer
- Step 2. Set Up the TDR System
- Step 3. Set Up the GPIB
- Step 4. Power up the TDR System

NOTE These installation instructions were written specifically for customers who have just received their TDR system with their PLTS software. If you have already been using your TDR system, you have probably completed most of these installation steps. Briefly review installation these steps to ensure that your system is currently set up as recommended. Then, begin the software installation process by starting at [Chapter 3, “Installing the PLTS Software,”](#) on page 41.

Step 1. Set Up the Personal Computer**Step 1. Set Up the Personal Computer**

1. Make sure that your PC meets the following minimum system controller requirements:

Table 2-1 Minimum PC Requirements by PLTS Modes of Operation

PC Requirement	Measurement Mode ONLY	Off-Line Analysis Mode
	In the lab, controlling test equipment and making quick analysis of the results.	In your office, performing “What if...” analysis, characterization, cross-domain analysis, filtering, waveform math, and eye diagram simulation
CPU	1 GHz	2 GHz
Main Memory	512 MB ^a	1 GB
Virtual Memory^b	1 GB	1.5 GB
GPIB Interface	Keysight 82357A USB/GPIB Interface for Windows or supported GPIB card (any National Instruments or Keysight 82340/41 or 82350 GPIB card)	No GPIB connection is required to utilize PLTS in the off-line mode. Saved (stored) measurement files can be recalled at any time for analysis.
Operating Systems	Windows XP SP2, or Vista 32 SP1 ^c	Windows XP SP2, or Vista 32 and Vista 64 SP1
Screen Resolution	1024 × 768	
Display Colors	High Color (16 Bit) or greater	

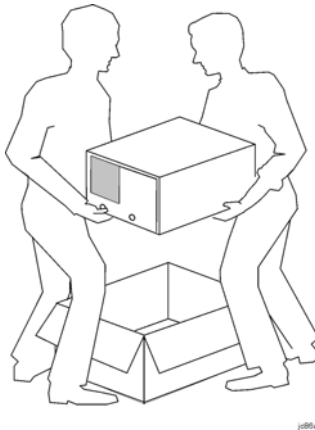
- a. 1 GB of Main Memory is recommended for the Measurement Mode when measuring 16,000 points with the PNA B-model network analyzer.
- b. As a general rule for optimum PC performance when using PLTS, virtual memory should be 1.5 to 2 times the size of the main memory.
- c. Earlier versions of Windows are no longer supported by PLTS.

NOTE Memory, both main and virtual, is critical to using PLTS effectively. As more applications are added to the PC, more memory is used. If your PC needs more memory, we suggest you take the time to remove unused programs.

2. Using the PC documentation, make sure that the PC is operating properly.
3. Make sure the GPIB card is installed in the PC and that it is operating properly.
4. Make sure the PC is located near where you will position the oscilloscope-based TDR system. Later in this process, you will connect the GPIB card to the TDR system using a GPIB cable.

Step 2. Set up the TDR System

1. Unpack your system from the containers in which it was shipped.



WARNING The TDR system hardware can be heavy. Use proper lifting techniques. Refer to the TDR system’s documentation for information regarding the equipment weight.

2. Carefully inspect the system to make sure that it was not damaged during shipment.

If your TDR system was damaged during shipment, refer to the system’s documentation to contact the manufacturer. If the manufacturer is Keysight, refer to [“Contacting Keysight” on page 88](#).

3. Using the TDR system’s documentation, set up the system as instructed, ensuring that the system’s permanent location is near the PC that was set up in Step 1 on [page 36](#).

CAUTION Both the Keysight and Tektronix TDR systems, although not required, may be connected to a computer network. Connecting to a computer network may present security risks to your TDR system.

Step 2. Set up the TDR System

4. Ensure that your TDR system is one of the following:
 - Keysight 86100A/B/C Infiniium Digital Communications Analysis Wide-Bandwidth Oscilloscope with:
 - Firmware: 86100A/B revision 03.06 or later / 86100C: revision 04.00 or later
 - 1 or 2 Keysight 54754A 18 GHz Differential TDR/TDT Plug-In Modules installed
 - Tektronix CSA8000 Communications Signal Analyzer Oscilloscope with:
 - Firmware revision 1.3.3 (check with your Tektronix representative for firmware)
 - 1 or 2 Tektronix 80E04 Dual Channel, 20 GHz TDR Sampling Modules installed in slot 1/2 and/or slot 3/4 only (no support for channels 5, 6, 7, or 8)
 - Tektronix TDS8000 Digital Sampling Oscilloscope with:
 - Firmware revision 1.3.3 (check with your Tektronix representative for firmware)
 - 1 or 2 Tektronix 80E04 Dual Channel, 20 GHz TDR Sampling Modules installed in slot 1/2 and/or slot 3/4 only (no support for channels 5, 6, 7, or 8)

CAUTION Avoiding ESD Damage to TDR Plug-In Modules

The input connectors are very sensitive to electrostatic discharge (ESD). When you connect a device or cable that is not fully discharged to the input connector, you risk damage to the module and expensive instrument repairs. Refer to your TDR documentation for detailed information regarding ESD susceptibility.

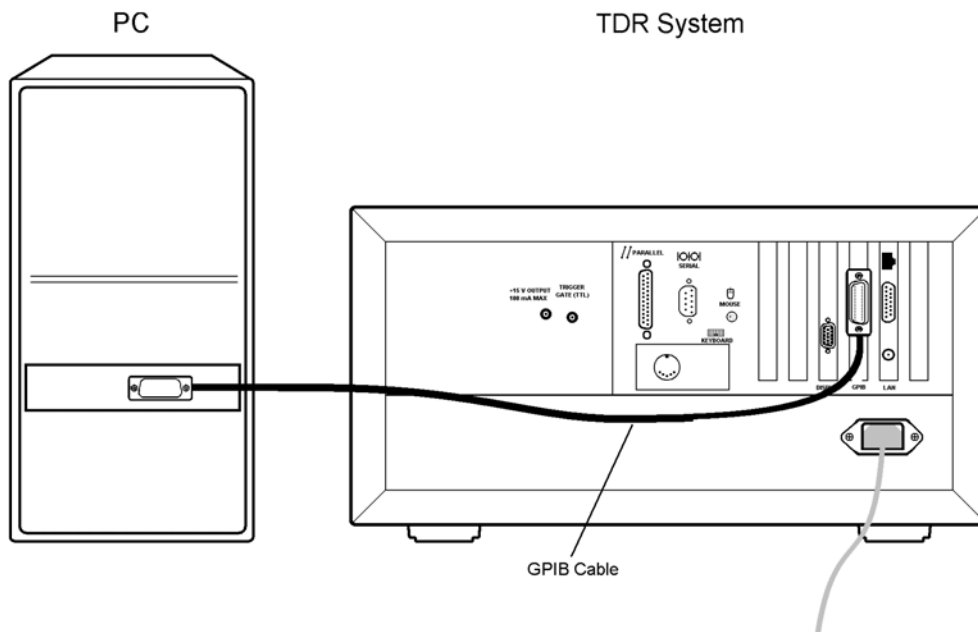
Step 3. Set Up the General Purpose Interface Bus (GPIB)

The PC uses the General Purpose Interface Bus (GPIB) to communicate with the test system hardware. The PLTS software will locate and identify your test system equipment automatically. Each test system device must have a unique GPIB address.

Check the GPIB address of your Keysight TDR system by selecting **Remote Interface** from the **Utilities** menu on the TDR display. To check the GPIB address of your Tektronix TDR system, refer to the programming manual for information.

NOTE There are 31 GPIB addresses, numbered 0 to 30. However, there may be the occasion that you need to change the GPIB address for test equipment. GPIB addresses are set using the equipment firmware. Refer to “Setting Up the General Purpose Interface Bus Manually” in the *PLTS User’s Guide* for more information.

1. Connect a GPIB cable from the PC GPIB card's connector to the rear-panel GPIB connector on the TDR system.



Step 4. Power up the TDR System

Step 4. Power up the TDR System

If you have not previously powered on your TDR system, start with step 1. If you have already powered on your TDR system, just review steps 1, 2, and 3 before continuing with step 4.

1. Ensure the available ac power supply meets the power source requirements and the operating environment meets the operating environment requirements for the TDR system. Refer to the TDR system documentation for the environmental specifications.
2. Verify that the ac power cable is not damaged, and that the power-source outlet provides a protective earth contact.

CAUTION Always use the three-prong ac power cord supplied with this product. Failure to ensure adequate earth grounding by not using this cord may cause product damage.

3. Connect the ac power cable from the power-source outlet to the ac input on the rear panel of the test set.
4. Turn on the PC and the TDR system.
5. The TDR system hardware installation is complete. Continue with the PLTS software installation by referring to [Chapter 3, "Installing the PLTS Software,"](#) on page 41.

3 Installing the PLTS Software

Installing the PLTS Software

This chapter leads you through the following steps to install and run the PLTS software:

- Step 1. Install or Upgrade PLTS Software
- Step 2. License the PLTS Software
- Step 3. Start the PLTS Software

Important PLTS Installation Notes

- If you have modified or custom cal kits, they are automatically saved at the start of the PLTS installation process. To learn how to restore them, type “restore” in the index of PLTS online Help.
- For optimum performance, PLTS should be installed on a computer with a 1.5 GHz CPU and 1 GB of RAM. Measurement accuracy is not affected by a slower computer.
- Close all other applications that are running on your computer.
- Ensure that PC communication with instruments is working BEFORE installing PLTS. **Note:** Beginning with Rev. 4.00, you can make a LAN connection to PNA hardware from the remote computer running PLTS. This is possible ONLY if the PNA has opt 550 or 551 installed and enabled. To learn more, type ‘LAN’ in the index of the PLTS Help file.
- To learn ALL about configuring Opt 550 and Opt 551, type ‘option 550’ in the index of the PNA Help file file.
- When installing PLTS on Microsoft Vista or Windows 7 operating systems, the User Account Control (UAC) feature will prompt you to authorize PLTS with higher privileges.

The PLTS installation also installs the following software programs or components. If you already have any of these software packages installed on your computer, you may be prompted to Modify, Repair, or Remove the application. Please select **Repair**.

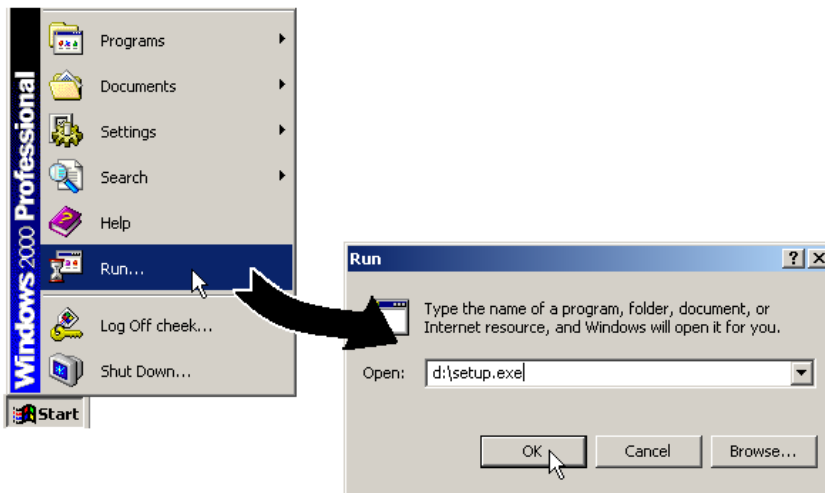
- Microsoft .NET Framework
- Keysight IO Libraries & VisaCom

See [Chapter 4, “Troubleshooting”](#) if you encounter problems with PLTS Installation.

Step 1. Install or Upgrade PLTS Software

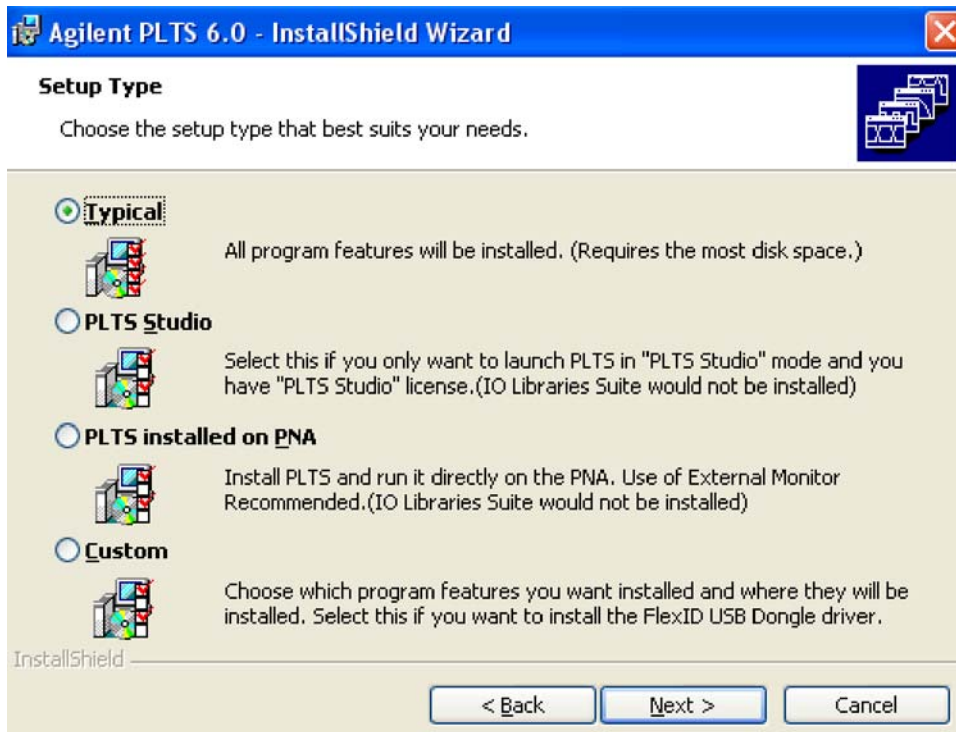
1. You can download the PLTS software from the Keysight Software Management System (KSM) at <http://www.keysight.com/find/softwaremanager>. For instructions on downloading the software, refer to your entitlement certificate that you received via email. After downloading the software, run the file titled Setup.exe. Alternatively, insert the PLTS software CD-ROM in your PC. The software should begin the installation process automatically.

If you are using the CD-ROM and the software does not start the automatic installation process, select **Start > Run...** in Windows as shown below. With the *Run* dialog box displayed, enter your CD-ROM drive letter followed by “\;Setup.exe”. For example, D:\Setup.exe. Then click **OK** and follow the onscreen instructions.



2. Follow the InstallShield Wizard prompts to Install or Upgrade the PLTS software and other software products.

Step 1. Install or Upgrade PLTS Software



- **Typical**: Select for all program features to be installed.
- **PLTS Studio**: Select for PLTS Studio (Analysis-Only mode).
- **PLTS Installed on PNA**: Select to run the program directly on a PNA. Use of an external monitor is highly recommended. IO Libraries Suite would not be installed.
- **PLTS Installed on PNA**: Select to install and run the software on a PNA rather than a computer.
- **Custom**: Select to install a PLTS driver for use with a **FlexID USB Dongle** driver (needed for a Transportable (USB key) license). At the following prompt, select **FLEXid 9 Drivers**, unselect **FLEXid 6_7 Drivers**, unselect **FLEXid 8 Drivers**, then click **Next**.



At the following prompt, select No, I will restart my computer later, then click Finish to continue with the PLTS installation



Step 2. License the Physical Layer Test System Software

NOTE For complete instructions on registering your PLTS (Physical Layer Test System Software) purchase with SUS (Software Update Service), requesting a PLTS update, and renewing your SUS subscription, refer to the **PLTS User Manual**. This can be viewed in the PLTS software on your PC (typically C:\Program Files\Keysight\PLTS_Revxx\Help) with or without an active product license. Also, it can be viewed online at <http://na.support.keysight.com/plts/help>.

This procedure instructs you on how to license your PLTS software, which is required before it can be used.

PLTS is available with three types of licenses: fixed (node-locked), networkable (floating), and transportable (USB key). The type of license that you have was determined at the time of purchase.

- A fixed (node-locked) license (Ex: N1930B-xFP) entitles you to use the software on only one personal computer and the software enforces that restriction.
- A networkable (floating) license (Ex: N1930B-xNP) entitles you to install the software license on one server and issue the license to any personal computer on the server network that has PLTS installed. The software enforces the restriction that a license can be checked out to one user at a time unless multiple PLTS networkable (floating) licenses are owned.
- A transportable (USB key) license (Ex: N1930B-xTP) entitles you to share a single license that is copied on multiple personal computers. When a USB key is connected to one of these computers, the PLTS software is enabled to run.

Stop! Do not proceed until you have determined the type of license you own.

- If you own a fixed (node-locked) license, continue with “[Setting Up the Fixed \(Node-locked\) License](#)” on page 47.
- If you own a networkable (floating) license, continue with “[Setting Up the Networkable \(Floating\) License](#)” on page 50.
- If you own a transportable (USB key) license, continue with “[Setting Up the Transportable \(USB Key\) License](#)” on page 57.

To see a complete description of PLTS Licensing, see the PLTS Help file. In PLTS, click **Help**, then **Licensing**.

Step 2. License the Physical Layer Test System Software**Setting Up the Fixed (Node-locked) License**

CAUTION The license is fixed (node-locked) which means that you are entitled to use the software on only one personal computer and the software enforces that restriction. Make sure that you license the software to the correct PC.

During this procedure, you will identify the host ID of one PC in order to license the software to that PC. Therefore, it is very important to confirm that you have loaded and are licensing the software to the correct PC.

1. In Windows, select **Start, Programs, Accessories**, then **Command Prompt**.
2. In the **Command Prompt** window, change the directory to the **License** subdirectory in the PLTS subdirectory using the following command:

```
cd x:\dddd\ssss\PLTS\License
```

where, x is the letter of the drive the software was installed on.
 dddd is the directory name the software was installed on.
 ssss is any subdirectories the software was installed on.

The default directory that the software is loaded on is: C:\Program Files\Keysight. Therefore, enter the following command to change to the default directory:

```
cd c:\Program Files\Keysight\PLTS_<software rev #>\License
```

3. Enter the following command as shown:

```
Imhostid
```
4. The host ID of the computer is displayed in window opened by the **Imhostid.exe** file. Write the host ID for your computer in the space provided below. You will need the host ID to request a license for the software.

If more than one Host ID is listed, see the procedure, **"Finding the correct Host ID when more**

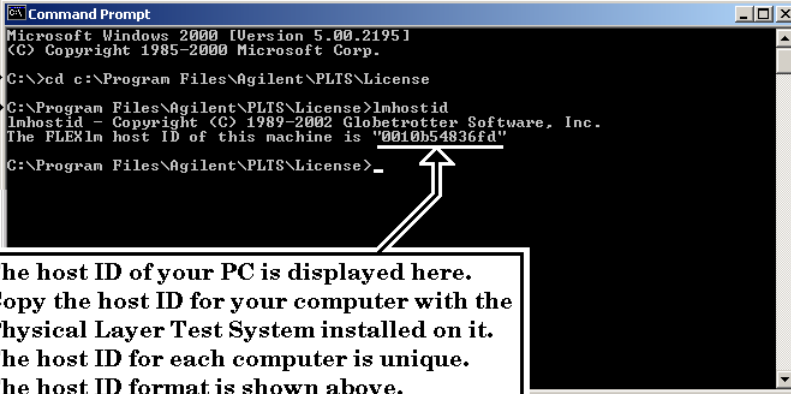
Installing the PLTS Software

Step 2. License the Physical Layer Test System Software

than one are listed” on page 49.

Change directory

Start the lmhostid executable file



```
Microsoft Windows [Version 5.00.2195]
(C) Copyright 1985-2000 Microsoft Corp.

C:\>cd c:\Program Files\Agilent\PLTS\License

C:\Program Files\Agilent\PLTS\License>lmhostid
lmhostid - Copyright (C) 1989-2002 Globetrotter Software, Inc.
The FLEXlm host ID of this machine is "0010b54836fd"

C:\Program Files\Agilent\PLTS\License>_
```

The host ID of your PC is displayed here. Copy the host ID for your computer with the Physical Layer Test System installed on it. The host ID for each computer is unique. The host ID format is shown above.

Record the host ID for your computer here:	
--	--

5. Locate the single certificate, titled “**Software License and Software Update Service Subscription Entitlement Certificate**” that was mailed to you from Keysight.

The certificate lists the **Order Number** and the **Certificate Number** for your software. These two numbers will also be used to request a license for your software.

6. Go to the Keysight KSM (Keysight Software Management) Web site listed on the “**Software License and Software Update Service Subscription Entitlement Certificate.**” Follow the instructions at the Web site to receive your license file for the software. While in the KSM system, you are automatically registered for a 1-year SUS (Software Update Service) subscription. You will need to provide the following information:

- **Order Number**
- **Certificate Number**
- **Host ID for your computer that will run the PLTS Software**

The Web site will also ask you to provide your e-mail address. The license file will promptly be sent to you via e-mail.

7. Once you receive the e-mail with the attached license file, save the file to the “License” directory (the same directory that you used earlier to identify the host ID).
8. Make a back up of the license file and store in a safe location.

This back up file is very important! You may need this back up file if you encounter problems with your computer or if the license file is lost or erased.

9. Continue with “**Step 3. Start the Physical Layer Test System Software**” on page 59.

Step 2. License the Physical Layer Test System Software

Finding the correct Host ID when more than one are listed

Sometimes several Host IDs are returned from the `lmhostid` program, as in the following image. In the case of this laptop computer there are three IDs listed in different colors: an Ethernet connection, a Wireless connection, and Ethernet Adapter. Some of these connections may not show up if they are not currently enabled, such as a Wireless connection.

```
C:\Program Files\Agilent\PLTS_4.0\License> lmhostid
lmhostid - Copyright (C) 1989-2002 Globetrotter Software, Inc.
The FLEXlm host ID of this machine is ""444553544200 001302460107 001560c8b3ac""
Only use ONE from the list of hostids.
```

You can choose only ONE host ID to license. Once a host ID is selected, it can not be changed.

To determine which ID belongs to which device, at a command prompt, type **ipconfig/all**. From the resulting display, like the one following, you can determine the physical address to which you can choose to license PLTS. The format shown is the MAC (physical) address format (nn-nn-nn-nn-nn-nn). However, you will use the host ID format from the above image (12 digits without hyphens) . The Host ID is the MAC (physical) address without the hyphens.

Step 2. License the Physical Layer Test System Software

```

Windows IP Configuration

    Host Name . . . . . : bobslaptop2
    Primary Dns Suffix . . . . . : agilent.com
    Node Type . . . . . : Hybrid
    IP Routing Enabled. . . . . : No
    WINS Proxy Enabled. . . . . : No
    DNS Suffix Search List. . . . . : soco.agilent.com
                                     agilent.com

Ethernet adapter Wireless Network Connection:

    Media State . . . . . : Media disconnected
    Description . . . . . : Intel(R) PRO/Wireless 3945
k Connection
    Physical Address. . . . . : 00-13-02-46-01-07

Ethernet adapter Local Area Connection:

    Connection-specific DNS Suffix . : soco.agilent.com.
    Description . . . . . : Broadcom NetXtreme Gigabit
    Physical Address. . . . . : 00-15-60-C8-B3-AC
    Dhcp Enabled. . . . . : Yes
    Autoconfiguration Enabled . . . . : Yes
    IP Address. . . . . : 141.121.84.219
    Subnet Mask . . . . . : 255.255.248.0
    Default Gateway . . . . . : 141.121.80.1
    DHCP Server . . . . . : 141.121.96.187
    DNS Servers . . . . . : 141.121.96.187
                             141.121.48.100
    Primary WINS Server . . . . . : 141.121.96.51
    Secondary WINS Server . . . . . : 130.29.152.23
    Lease Obtained. . . . . : Monday, October 22, 2007 1
    Lease Expires . . . . . : Monday, October 29, 2007 1

Ethernet adapter {966D0C87-2635-4AC7-978D-A8FC0EEE93AB}:

    Connection-specific DNS Suffix . :
    Description . . . . . : Nortel IPSECSHM Adapter -
eduler Miniport
    Physical Address. . . . . : 44-45-53-54-42-00
    Dhcp Enabled. . . . . : No
    IP Address. . . . . : 0.0.0.0
    Subnet Mask . . . . . : 0.0.0.0
    Default Gateway . . . . . :
    
```

Setting Up the Networkable (Floating) License

The *Networkable (Floating)* license allows you to use PLTS on one of many PCs (or clients), utilizing a single license on a common server. The server issues the license to any of the clients that attempt to run PLTS. If the license is already being used by another client, notification is provided that the license is in use. The number of licenses installed dictates the number of clients that can use the software at the same time.

Step 2. License the Physical Layer Test System Software

Important - When upgrading to PLTS version 4.5 and higher:

Previous versions use FlexLm version 8.2. With PLTS 4.5, your license server must be upgraded to FlexLm 11.4. The necessary files are included with your PLTS software on the installation CD. Here is how to upgrade:

1. Copy the files listed below (in **“Preparing the License Server” on page 51**) to your server and restart the new version on the server.
2. If already using FlexLm 11.4, then replace the Keysight daemon file and use the new license file.

Notes:

- It is very important to license the software to the correct server.
- To use PLTS, the client PC must be on the same network as the license server.
- With this type of license, a PC can be both a server and a client. This allows the PC to use the PLTS software or issue the license for other PCs on the network.
- PLTS supports servers that use Windows Vista, Windows 7, Windows XP, Solaris 9, Solaris 10, Red Hat Linux, and HP-UX 11 operating systems.

Preparing the License Server

1. After you have installed PLTS on your PC (one of the client machines), navigate to one of the following directories:

If installing on a Solaris server, navigate to C:/Program Files/Keysight/PLTS/License/Sun4

If installing on a HP-UX server, navigate to C:/Program Files/Keysight/PLTS/License/hp700

If installing on a PC server, navigate to C:/Program Files/Keysight/PLTS/License/

Copy all of the files in the directory from your PC to the server. While you could save these files to any directory on your server, we recommend that you create a similar directory structure on your server.

Obtaining the License

2. From a *Command Prompt* window, run the `lmhostid` executable file to display the host ID for the license server by typing: `lmhostid`
3. The host ID of the server is displayed in the *Command Prompt* window.

The Host ID is the MAC (physical) address without the hyphens. When you request a Networkable license in the Keysight Software Management System (KSM), you are prompted to provide the server MAC (physical) address. For a Windows system, enter the 12 character

Step 2. License the Physical Layer Test System Software

host ID as the MAC address (do not insert hyphens). For a Solaris system, enter the eight character host ID as the MAC (physical) address (do not insert hyphens).

Customers using a triple redundant server system must provide three MAC (physical) addresses - one for each server.

CAUTION This software license is locked to a specific server that you provide information for when obtaining the license. Make sure that you obtain and provide the MAC (physical) address for the correct server when requesting your license.

4. You also need the network server name to request a license file in KSM. To locate the server name of your network, from Windows **Control Panel**, click the **System** icon to open the *System Properties* dialog box. On the **Network Identification** tab, locate the **Full Computer Name** entry. The server name of the network is the first portion of the **Full Computer Name**. For example:



When requesting a Networkable license in the Keysight Software Management System (KSM), customers using a triple redundant server system must provide three server names - one for each server.

Write the server name and MAC (physical) address for your server in the space provided below. Remember, the Host ID is the MAC (physical) address without the hyphens. Do not use hyphens when entering the MAC (physical) address in KSM.

<p>Record the server name and MAC (physical) address for your server here:</p> <p>* For a one server system, use the format: SERVERNAME space MACADDRESS</p> <p>* For a triple redundant server system, use the format: SERVERNAME1 space MACADDRESS1 space SERVERNAME2 space MACADDRESS2 space SERVERNAME3 space MACADDRESS3</p>	
--	--

5. Locate the “**Software License and Software Update Service Subscription Entitlement Certificate**” that was mailed to you from Keysight. The certificate lists the **Order Number** and

Step 2. License the Physical Layer Test System Software

the **Certificate Number** for your software. These two numbers will also be needed to request a license for your software.

6. Go to the Keysight KSM (Keysight Software Management) Web site listed on the “**Software License and Software Update Service Subscription Entitlement Certificate**.” Follow the instructions at the Web site to receive your license file for the software. While in the KSM system, you are automatically registered for a 1-year SUS (Software Update Service) subscription. You will need to provide the following information:

- **Order Number**
- **Certificate Number**
- **MAC (physical) address for your PLTS license server**
- **Server Name for your PLTS license server**

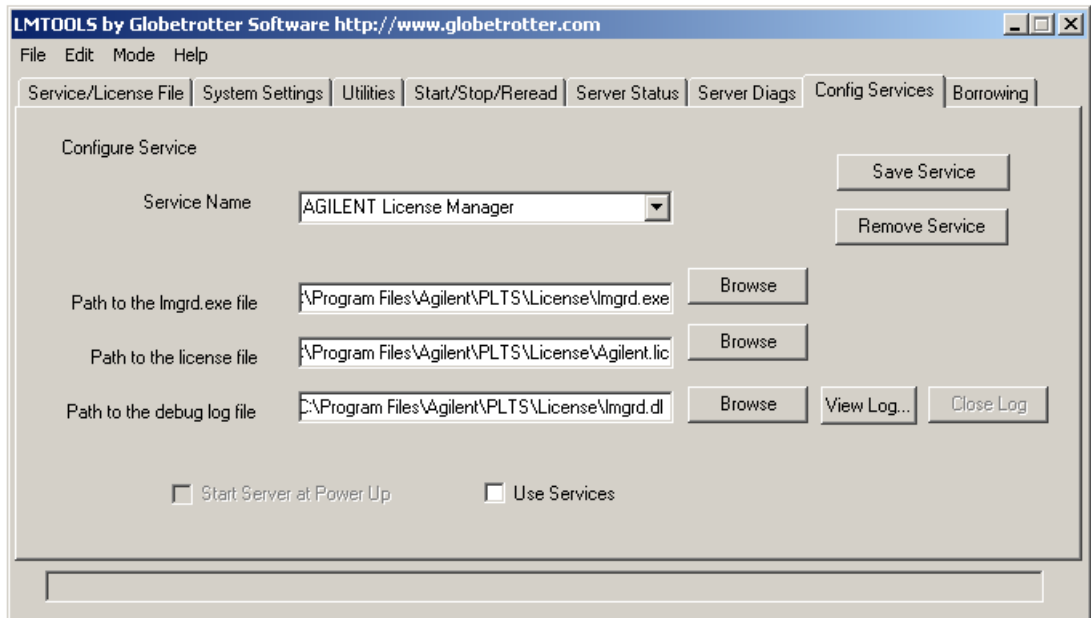
The Web site will also ask you to provide your e-mail address. The license file will promptly be sent to you via e-mail.

Setting Up the License Server

7. Once you receive the e-mail with the attached license file, save the license file to the server's PLTS License directory (the same directory that you created on your server earlier).
8. Make a back up of the license file and store in a safe location. **This back up file is very important!** You may need this back up file if you encounter problems with your computer or if the license file is lost or erased.
9. In the server's PLTS License directory (or sub directory), double click the **lmtools.exe** file to open the *LMTools* dialog box. Select the **Config Services** tab. On this tab:
 - a. In the **Service Name** list, select or enter **KEYSIGHT License Manager**.
 - b. In the **Path to the LMgrd.exe file** text box, enter the path to the server's PLTS license directory followed by the **lmgrd.exe** file name.
 - c. In the **Path to the license file** text box, enter the path to the server's PLTS license directory followed by the file name of the license that you copied to the directory.
 - d. In the **Path to the debug log file** text box, enter the path to the server's PLTS license directory followed by the **lmgrd.dl** file name.
 - e. Click the **Use Services** check box and then click the **Start Server at Power Up** check box to make the PLTS license available for PLTS on restart of the server.
 - f. Click the **Save Service** button to save the changes.

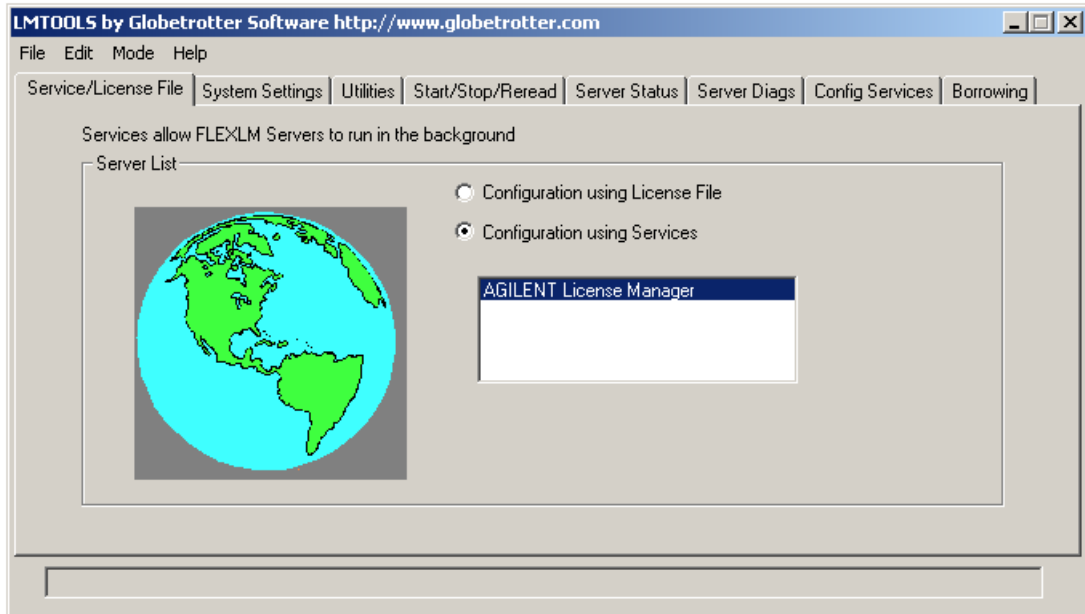
Installing the PLTS Software

Step 2. License the Physical Layer Test System Software



Step 2. License the Physical Layer Test System Software

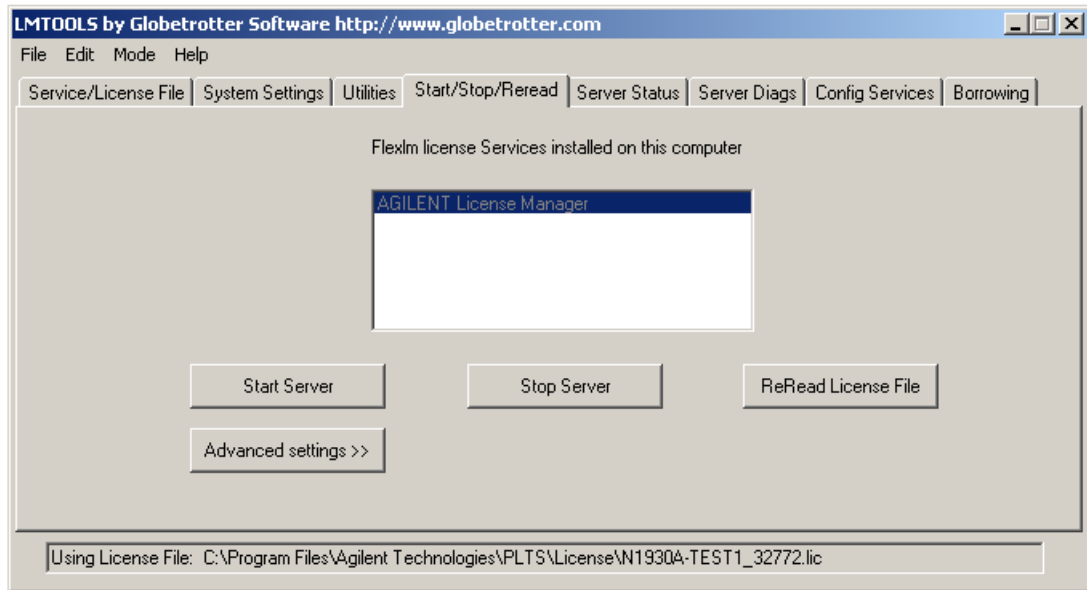
10. Select the **Service/License File** tab. Select **KEYSIGHT License Manager**, then click **Configuration using Services**.



Installing the PLTS Software

Step 2. License the Physical Layer Test System Software

11. Select the **Start/Stop/Reread** tab. Select **KEYSIGHT License Manager** . Then click **Start Server**. This step must be repeated each time the server is powered up if you did not click the **Start Server at Power Up** check box earlier in this procedure.



Step 2. License the Physical Layer Test System Software**Setting Up the Transportable (USB Key) License**

CAUTION Keep the USB key (dongle) in a safe location when it is not connected to a computer. Without it, you cannot run the PLTS software.

1. Locate the serial number - also called the FLEXid - of the USB key (dongle) that was included in your PLTS shipment. As shown in the following graphic, this number is located on the label of the bag that holds the USB key (dongle). It is also stamped on the USB key (dongle). This number is formatted as: one hexadecimal character, a dash, and eight hexadecimal characters (x-xxxxxxxx).



- 2.

Record the serial number, or FLEXid, of your USB key (dongle) here:	
--	--

3. Locate the “**Software License and Software Update Service Subscription Entitlement Certificate**” that was mailed to you from Keysight.

The certificate lists the **Order Number** and the **Certificate Number** for your software. These two numbers will also be used to request a license for your software.

4. Go to the Keysight KSM (Keysight Software Management) Web site listed on the “**Software License and Software Update Service Subscription Entitlement Certificate.**” Follow the instructions at the Web site to receive your license file for the software. While in the KSM system, you are automatically registered for a 1-year SUS (Software Update Service) subscription. You will need to provide the following information:

- **Order Number**
- **Certificate Number**

Step 2. License the Physical Layer Test System Software

- **USB Key (dongle) Serial Number (also called the FLEXid)**

The Web site will also ask you to provide your e-mail address. The license file will promptly be sent to you via e-mail.

5. With a Transportable license, every computer you intend to use to run the PLTS software with the USB key (dongle) must contain a copy of the license file and the PLTS software file. Once you receive the e-mail with the attached license file, save the file to the default directory that the software is loaded on: C:\Program Files\PLTS\License.

6. Make a back up of the license file and store in a safe location.

This back up file is very important! You may need this back up file if you encounter problems with your computer or if the license file is lost or erased.

7. Continue with **“Step 3. Start the Physical Layer Test System Software”** on page 59.

Step 3. Start the Physical Layer Test System Software

Step 3. Start the Physical Layer Test System Software

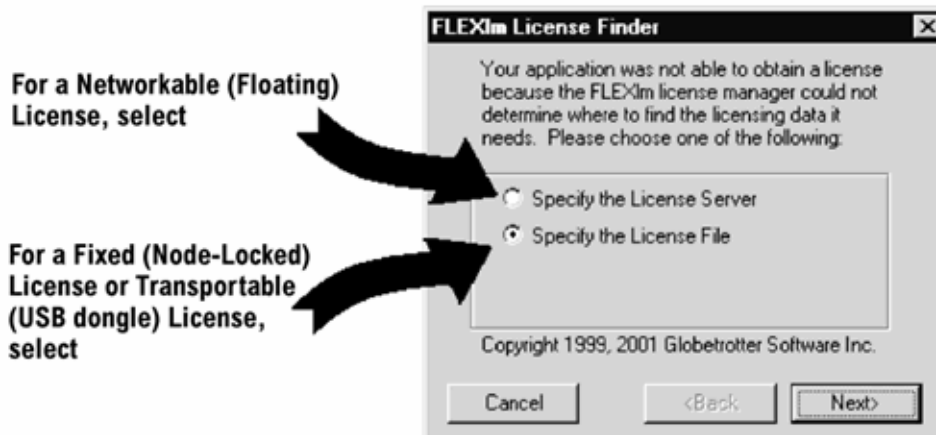
1. Start the PLTS software by double-clicking the **Keysight PLTS** icon on the PC desktop.



You may also run PLTS by selecting **Start**, then **Programs**, then **Keysight Technologies**, then **PLTS <version>**, then **PLTS <version>**.

NOTE To learn about other PLTS tools which are available from this menu, on the PLTS Help file Home page, click **Tools and Utilities**

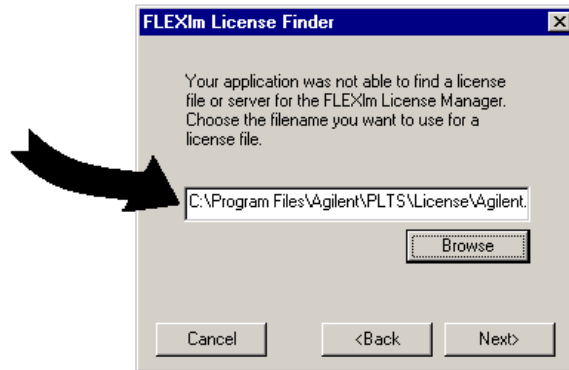
2. The first time you start the software, you will be asked to identify the license type of the software. Select your type of license file, then click **Next>**.



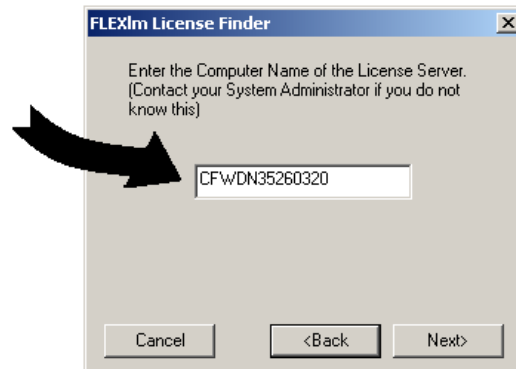
3. Then, one of the following dialog boxes are shown depending on your type of license:
 - **If you own a fixed (node-locked) license:** Click **Browse** and select the license file in the

Step 3. Start the Physical Layer Test System Software

License directory. Then click **Next>**.



- **If you own a networkable (floating) license:** Enter the network computer server name that you recorded earlier.



- When the license is found and identified, click **Finish**.



Step 3. Start the Physical Layer Test System Software

NOTE Make a back-up copy of the license file if you have not already done so.

4. After the licensing is completed, the software scans the GPIB bus to find available PLTS hardware.
5. For more information on finding or selecting PLTS hardware, or to see complete information on PLTS licensing, from the PLTS menu, click **Help**.

Installing the PLTS Software

Step 3. Start the Physical Layer Test System Software

4 Troubleshooting

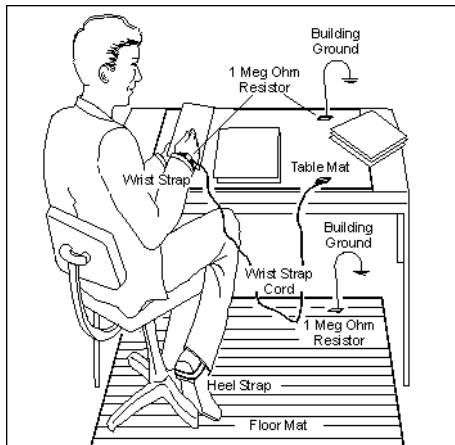
Electrostatic Discharge

Although protected internally, test systems are sensitive to electrostatic discharge (ESD). Static discharges too small to feel can damage or degrade the test equipment or your devices.

Use standard precautions to protect against ESD before using the test system for calibration or measurement.

Use the following illustration and list of equipment to set up a static-safe workstation.

Figure 4-1 Static-Safe Workstation



0 mat6

- static-control table mat and earth ground wire: part number 9300-0797
- wrist-strap cord: part number 9300-0980
- wrist-strap: part number 9300-1367
- heel-straps: part number 9300-1308
- floor mat: not available through Keysight Technologies

PLTS Installation Troubleshooting

This section provides some background and gives solutions for correcting PLTS installation problems. The following issues are covered in this section:

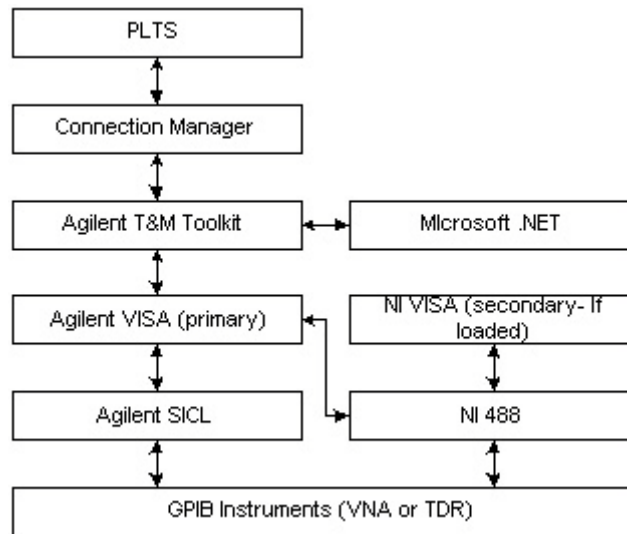
- [“Connection Manager working with .NET and the T&M Toolkit” on page 66](#)
- [“PLTS does not recognize the Keysight USB to GPIB adapter.” on page 66](#)
- [“Problems with the VISA Layer” on page 68](#)
- [“Problems with VISA COM \(SOAP Error\)” on page 68](#)
- [“Problems with using National Instruments I/O Devices” on page 71](#)
- [“I/O Troubleshooting Steps” on page 72](#)
- [“Missing Microsoft Component” on page 79](#)
- [“XP Firewall Blocks Keysight Connection Manager” on page 79](#)
- [“Plots Not Drawing or Refreshing Correctly” on page 80](#)

Connection Manager working with .NET and the T&M Toolkit

PLTS Connection Manager communicates with instruments and scans for instruments connected to the bus. The PLTS Connection Manager is built on Keysight's Test and Measurement Programmers Tool Kit (T&M Toolkit), which requires Microsoft's .NET package. Figure 4-2 shows PLTS and its dependencies on other software products and how it communicates with instruments.

Figure 4-2

PLTS Instrument Communication Hierarchy



Note: The German version of .NET does not work with PLTS

PLTS does not recognize the Keysight USB to GPIB adapter.

Restart PLTS after performing one of these procedures.

For Keysight IO Libraries M.01.04

1. In Windows, select **Start, Programs, Keysight IO Libraries**, then **IO Config**.
2. In the Configured Interfaces List, click the "GPIBx" that corresponds to the GPIB card that you are using.
3. Click **Edit**.
4. Change the SICL Interface Name to be identical to the VISA Name.
5. Click **OK**, then click OK to confirm the change.

For Keysight IO Libraries Suite 14

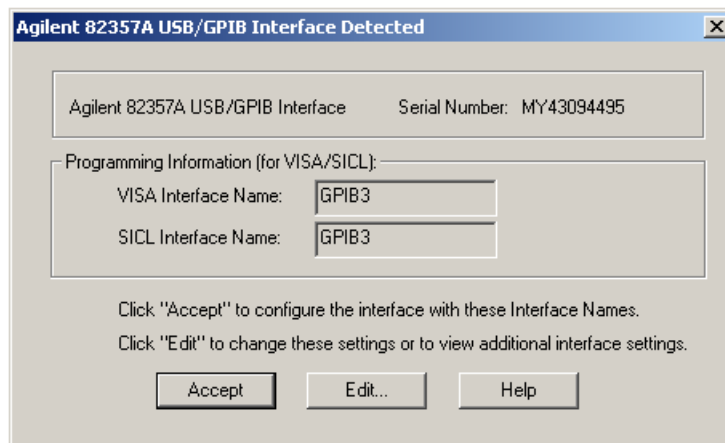
1. In Windows, select **Start, Programs, Keysight IO Libraries Suite**, then **Keysight Connection Expert**.
2. In the Configured Interfaces List, click the "GPIBx" that corresponds to the GPIB card that you are using.
3. Click **Change Properties**.
4. Change the SICL Interface ID to be identical to the VISA ID.
5. Click **OK**, then close the Keysight Connection Expert to confirm the change.

Other Keysight USB to GPIB Adapter Problems

1. If the computer goes into hibernation with the adapter connected, the adapter will not work when the computer comes out of hibernation.
2. If the adapter is connected to a docking station and the laptop is powered up (or rebooted), sometimes the adapter will not work.

To get the adapter to work for either case, make sure the PC is fully powered up and Windows is functional, then unplug the USB connection and reconnect the adapter. The Microsoft Operating System will find the new hardware and a dialog box similar to [Figure 4-3](#) will be displayed. It should remember your previous settings for the interface names, so click the **Accept** button and the adapter should operate correctly.

Figure 4-3 Keysight 82357A USB/GPIB Interface Detected Dialog Box



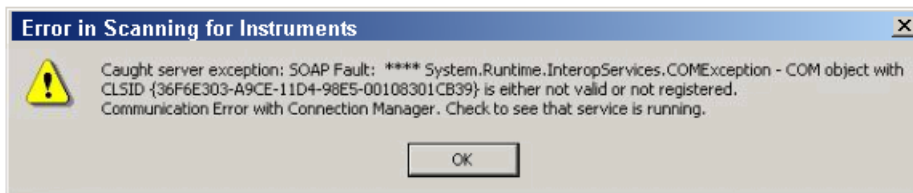
Problems with the VISA Layer

For PLTS Connection Manager to operate correctly and consistently, the Keysight VISA needs to be the primary (or the only) VISA installed. If the NI VISA is installed first, it usually assumes the primary position. When loading the Keysight I/O libraries second (as with PLTS), the Keysight VISA should be set as the primary VISA. Problems may occur leaving the Keysight VISA as secondary VISA. Refer to [Figure 4-5](#) through [Figure 4-8](#) for more details. To quickly check the VISA status, see [“I/O Troubleshooting Steps” on page 72](#) for directions.

Problems with VISA COM (SOAP Error)

The error message shown in [Figure 4-4](#) may be displayed when running PLTS. This error is generated because the VISA COM was not loaded with the Keysight IO libraries.

Figure 4-4 Scanning for Instruments Error Message

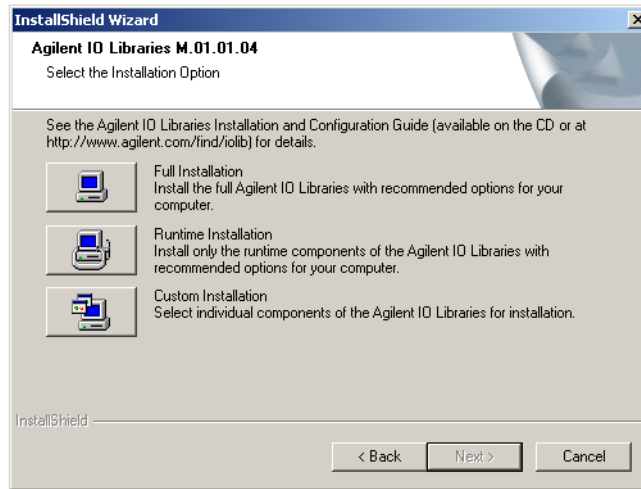


The VISA COM must be loaded for PLTS Connection Manager to work. If the IO libraries are already installed, uninstall then re-install the IO libraries. This can be done by re-installing PLTS or by downloading the IO libraries from the Keysight ADN web page:

<http://www.keysight.com/find/iolib>

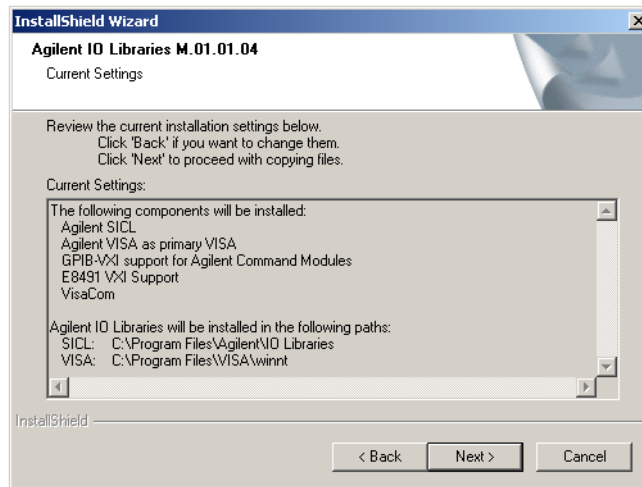
Choose the **Full Installation** selection during the PLTS installation. See [Figure 4-5](#).

Figure 4-5 **Keysight IO Libraries M.01.01.04 Select Installation Option Screen**



The **Full Installation** selection automatically loads the Keysight VISA COM and sets it as the primary VISA. See [Figure 4-6](#).

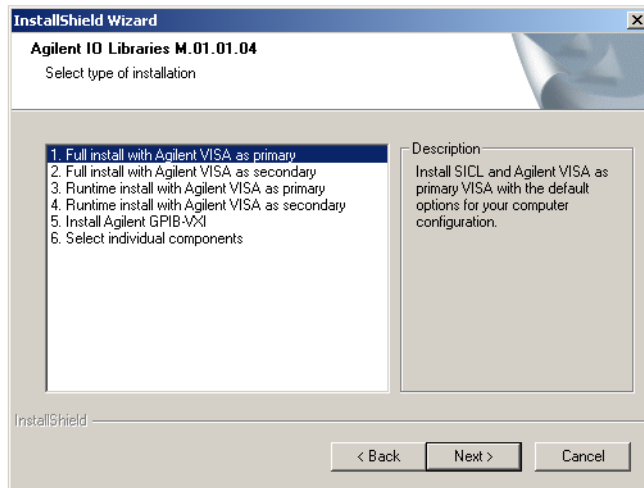
Figure 4-6 **Keysight IO Libraries M.01.01.04 Current Settings Screen**



If you chose the **Custom Installation** selection, you must now choose how to install the VISA. Choose Option 1 **Full install with Keysight VISA as primary** (this method is used when loaded with PLTS) or Option 3 **Runtime install with Keysight VISA as primary**. See [Figure 4-7](#).

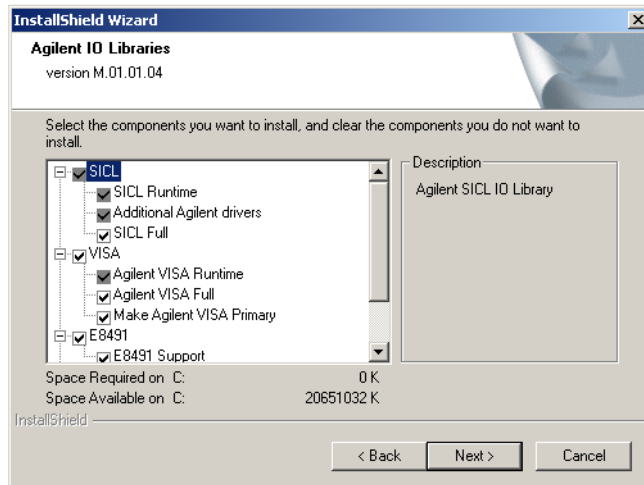
PLTS Installation Troubleshooting

Figure 4-7 Keysight IO Libraries M.01.01.04 Select Type of Installation Screen



If you chose Option 6 **Select individual components** or reinstallation from the PLTS disk, you may get the display shown in [Figure 4-8](#).

Figure 4-8 Keysight IO Libraries version M.01.01.04 Screen



If so, make sure that the **VISA** and **Make Keysight VISA Primary** selections are selected.

A VISA COM only loader is available on the ADN web page:

<http://www.keysight.com/find/iolib>

Problems with using National Instruments I/O Devices

If you are using a PCMCIA or PCI NI GPIB, card, the NI software drivers should be loaded first before loading PLTS. There have been occasions where loading the NI software has been problematic. The installation may complete without any apparent errors. However, when running the National Instruments/NI488.2/Getting Started, an error is displayed indicating that the software was not loaded correctly and must be reloaded. Occasionally, getting past this problem has been difficult. Reloading does not seem to help. Sometimes there is a problem identifying the I/O card and getting it to work. In all cases, contact National Instruments technical support representative.

With the NI GPIB-USB-B adapter shown in [Figure 4-9](#), use the latest NI drivers.

Figure 4-9 National Instruments GPIB-USB Adapter



The latest NI drivers can be downloaded from:

<ftp://ftp.ni.com/support/gpib/ni488221/ni488221.exe> (104 MB)

The NI VISA code can be downloaded from:

<ftp://ftp.ni.com/support/visa/drivers/win32/3.0.1/visa301full.exe> (68 MB)

If problems occur when trying to use the NI GPIB-USB-B interface, it may be necessary to force a clean installation by performing the following steps:

1. Uninstall PLTS.
2. Uninstall “all” NI products using **Start, Settings, Control Panel**, and **Add/Remove Programs**.
3. Reboot your computer.
4. Uninstall Keysight IO Libraries using **Start, Settings, Control Panel**, and **Add/Remove Programs**.
5. Uninstall Keysight VISA Com using **Start, Settings, Control Panel**, and **Add/Remove Programs**.
6. Uninstall the Keysight T&M Toolkit using **Start, Settings, Control Panel**, and **Add/Remove Programs**.
7. Reboot your computer.

PLTS Installation Troubleshooting

8. Install the new NI driver. Reboot your computer if prompted.
9. Install NI VISA. Reboot your computer if prompted.
10. Install PLTS. Ensure that the Keysight VISA Layer is the primary VISA. See [Figure 4-17 on page 75](#).
11. For NI Labview code to run properly, you will need to enable **TULIP Passport** in NI Labview.

I/O Troubleshooting Steps

This section provides some steps to troubleshooting the I/O section of the PLTS system. The steps include:

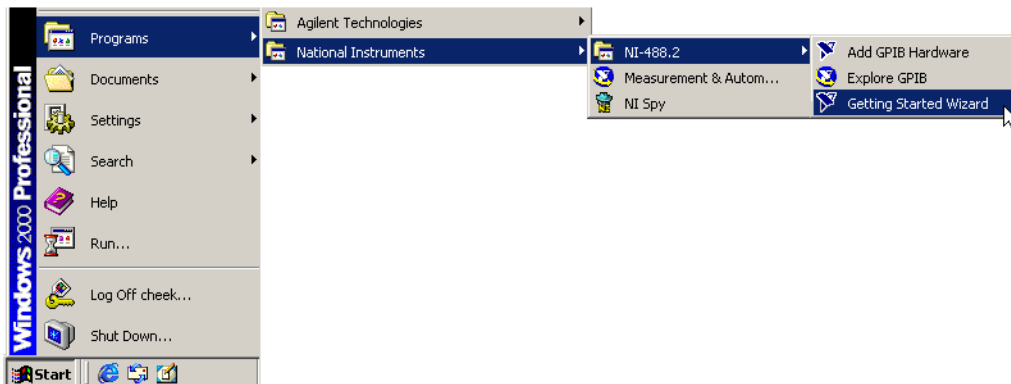
1. Troubleshooting the National Instruments (NI) software, hardware, and connections [on page 72](#)
2. Troubleshooting the Keysight I/O libraries [on page 75](#)

Troubleshooting the NI Software, Hardware, and Connections

If you are using a National Instruments (NI) GPIB card, troubleshoot the NI software, hardware, and connection by doing the following:

1. Click **Start, Programs, National Instruments, NI-488.2, Getting Started Wizard** to run the NI-488.2 Getting Started Wizard. See [Figure 4-10](#).

Figure 4-10 National Instrument Getting Started Menu Selection



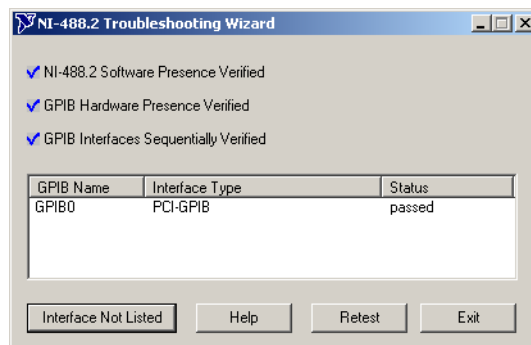
2. The *NI-488.2 Getting Started Wizard* (shown in [Figure 4-11](#)) is displayed. This wizard checks the status of the NI software and GPIB card. Click the **Verify your hardware and software installation** selection.

Figure 4-11 NI-488.2 Getting Started Wizard



A dialog box similar to [Figure 4-12](#) is displayed, indicating if the software and cards are working properly. If errors are identified, they must be resolved before continuing to the next step.

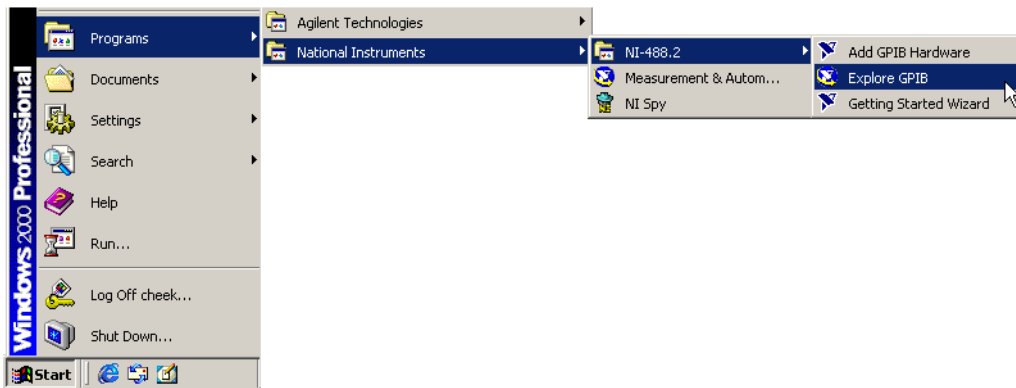
Figure 4-12 NI-488.2 Troubleshooting Wizard



3. Click **Start, Programs, National Instruments, NI-488.2, Explore GPIB** as shown in [Figure 4-13](#) to verify the NI driver and card can communicate with the instruments.

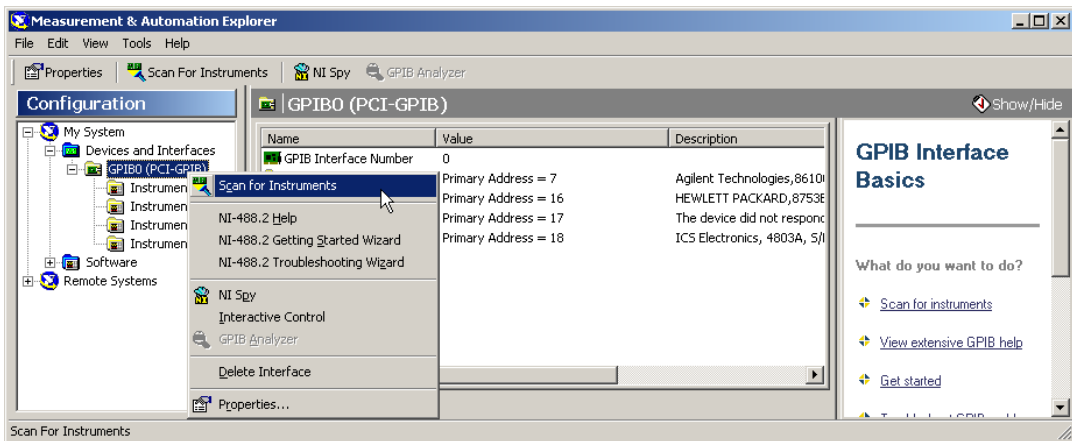
NOTE Make sure the GPIB interface cable is connected to the instruments.

Figure 4-13 National Instrument Explore GPIB Menu Selection



4. When the *Measurement & Automation Explorer* window is displayed (Figure 4-14), click the “+” on the **Devices and Interfaces** item to show the configured interface cards. Right-click the interface and select **Scan for Instruments**. This starts a scan to detect all instruments connected to that interface card.

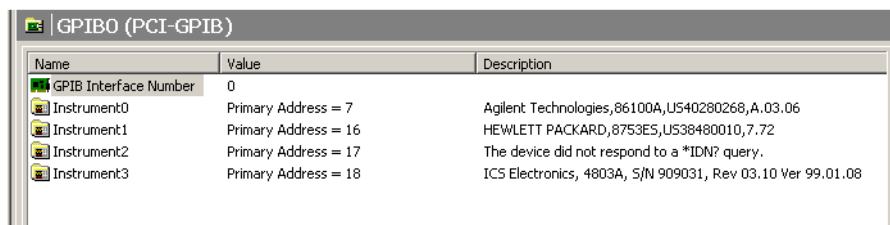
Figure 4-14 NI Measurement & Automation Explorer Window



The detected instruments are shown in the center pane of the window. See Figure 4-15.

If the connected instruments are correctly listed, then the National Instruments software, driver, GPIB card, and connection to the instruments are all properly working. If not, resolve the problem before continuing to the next step.

Figure 4-15 Center Pane of NI Measurement & Automation Explorer Window



Troubleshooting the Keysight I/O Libraries

Troubleshoot the Keysight I/O libraries by doing the following:

1. When the **Keysight IO Control** is running, a blue **IO** icon is displayed in the task bar as shown in **Figure 4-16**. Right-click the **IO** icon.

Figure 4-16 Keysight IO Control Icon

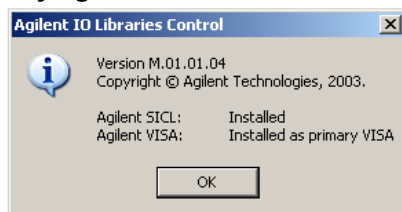


If the **Keysight IO Control** is not already running, start run it by clicking **Start, Programs, Keysight IO Libraries, and IO Control**.

2. Select **About Keysight IO Libraries Control** to verify that the Keysight libraries are installed and Keysight VISA is set as the primary VISA.

The displayed *Keysight IO Libraries Control* dialog box should indicate that the Keysight SICL libraries are installed and the Keysight VISA is set as the primary VISA. This is required for PLTS to work correctly. If either of these is not correct, reload the Keysight IO libraries.

Figure 4-17 Keysight IO Libraries Control Dialog Box

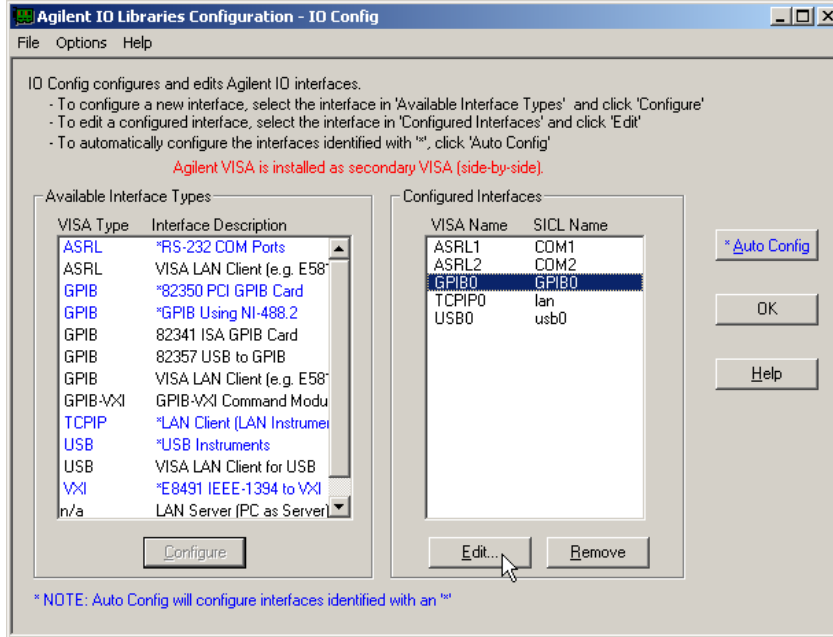


3. Right-click the **IO** icon and select **Run IO Config** to run the IO Libraries Configuration.

This displays the *Keysight IO Libraries Configuration – IO Config* dialog box. Check that the desired GPIB interface is configured. If it is not, configure the interface by either selecting **Auto Config** or manually configure the interface by selecting the interface and clicking the **Edit**^o

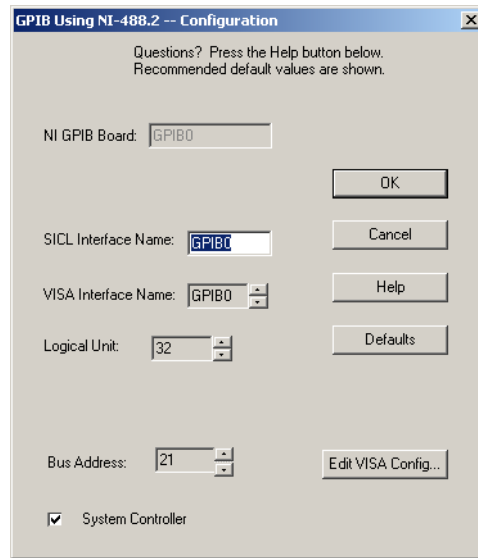
button.

Figure 4-18 Keysight IO Libraries Configuration – IO Config Dialog Box



4. For all GPIB interfaces used with PLTS, the **VISA Interface Name** and **SICL Interface Name** MUST BE THE SAME (including the case). For NI GPIB interfaces, the **NI GPIB Board** name must also be the same. Click **OK**.

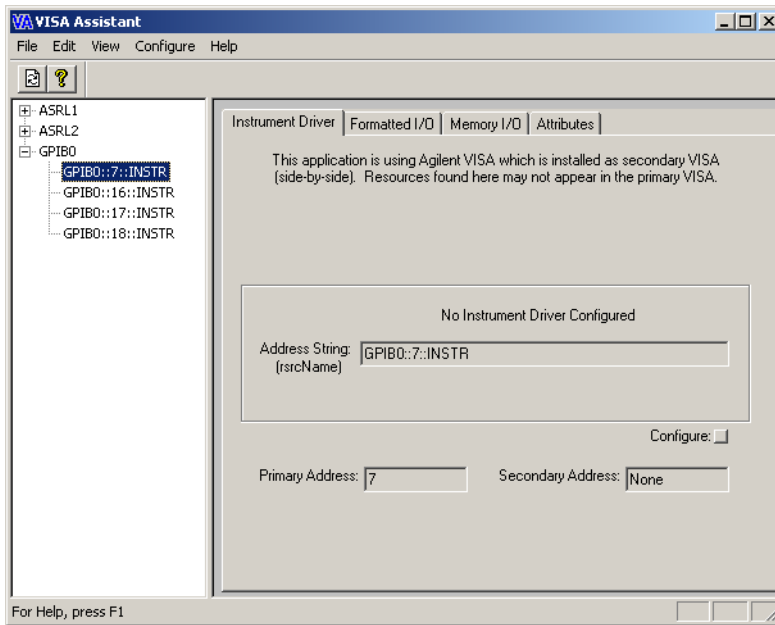
Figure 4-19 GPIB Using NI-488.2 -- Configuration Dialog Box



5. Click **OK** to close the *Keysight IO Libraries Configuration – IO Config* dialog box.
6. Right-click the **IO** icon and select **Run VISA Assistant** to confirm the GPIB card controls the instruments. When the VISA Assistant is started, the instruments connected to the GPIB interface should be displayed in the *VISA Assistant* dialog box. See the right side of the *VISA Assistant* dialog box..

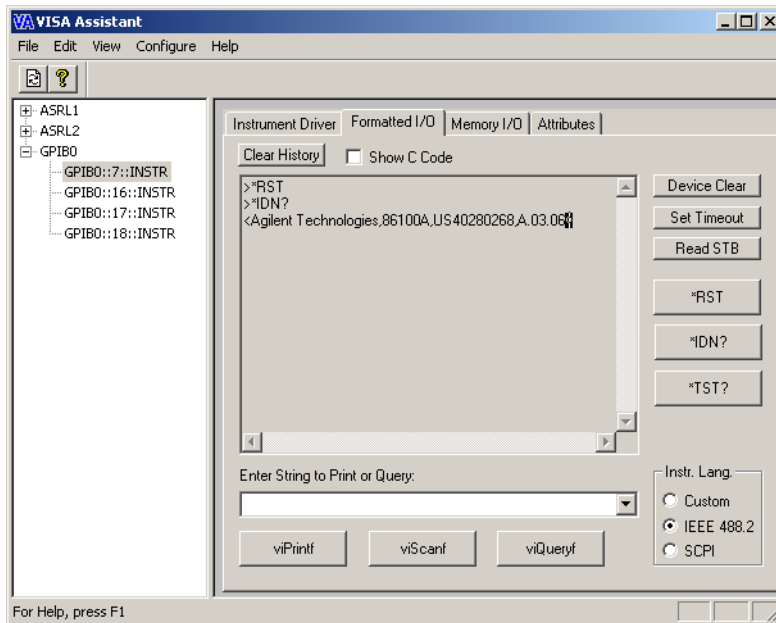
Troubleshooting
PLTS Installation Troubleshooting

Figure 4-20 VISA Assistant Dialog Box -- Instrument Driver Tab



7. To send a command to the instrument, select the **Formatted I/O** tab..

Figure 4-21 VISA Assistant Dialog Box - Formatted I/O Tab



8. In the *VISA Assistant* dialog box, select a GPIB address in the right pane, and then select **IEEE 488.2** in the **Instr. Lang.** area.
9. Click the ***RST** button to send a reset command to the instrument. Then click the ***IDN?** button to query the instrument for its ID string.

The instrument information is displayed which verifies that the GPIB interface, driver and libraries are properly loaded and working, as well as the NI card, if it is being used.

Missing Microsoft Component

When installing PLTS, if the following error is displayed, comctl32.ocx has to be installed and registered.

'Component 'comctl32' or one of its dependencies not correctly registered: a file is missing or invalid'

XP Firewall Blocks Keysight Connection Manager

When starting PLTS, you may see a message indicating that the XP firewall has blocked the PLTS Connection Manager. You can then click OK to allow access. The following procedure manually

PLTS Installation Troubleshooting

performs the same operation:

1. Close the PLTS application.
2. Click **Start, <Settings>, Control Panel, Windows Firewall**.
3. Click the **Exceptions** tab.
4. Click **Add Program**.
5. In the Add a Program dialog box, click PLTS, and then click OK. The program will appear, selected, on the Exceptions tab, under Programs and Services. Click OK.

Plots Not Drawing or Refreshing Correctly

If you see problems with plots not being drawn, but instead you see black boxes, this may be due to hardware acceleration problems. To fix this:

1. Close the PLTS application.
2. Click **Start, <Settings>, Control Panel, Display**.
3. On the **Settings** tab, click **Advanced**.
4. On the **Troubleshoot** tab, reduce the Hardware Acceleration control until Direct Draw and DirectX acceleration is disabled.

PLTS Hardware Troubleshooting

Use [Table 4-1](#) to help troubleshoot your Physical Layer Test System VNA-based hardware.

Table 4-1 Troubleshooting the PLTS VNA-Based Hardware

Symptom	Cause	Cure
One or more biases not applied.	Bias fuse blown.	Check bias fuses. Replace blow fuse with fuse of the same type and rating. Refer to the test set rear-panel information in Chapter 6 .
Control computer can't communicate with the test set.	Accidental change to GPIB switch settings.	Set the GPIB address as needed. Restart the test system. See " Step 7. Set up PC to PLTS Communication " on page 26.
The test set does not come on the first time you use it.	Line fuse not installed, or incorrect line fuse installed.	Install the line fuse.
Excessive ripple in data.	Load termination damaged by excessive RF power.	Contact Keysight Technologies. See " Contacting Keysight " on page 88 for more information.
	Loose connections between VNA and test set and/or between test set and DUT.	Check and torque the connectors.
	Poor test cable repeatability.	Replace test cables as needed. You can replace a single cable, without replacing the entire set.
High loss on one path with poor raw data match (as seen during analyzer sweep) or inability to make a good calibration.	Possible signal channel damage.	Contact Keysight Technologies. See " Contacting Keysight " on page 88 for more information.

Troubleshooting PLTS Using a Tektronix CSA8000 or TDS8000

PLTS is designed to use the following Tektronix equipment.

- Tektronix CSA8000 Communications Signal Analyzer equipped with one or two 80E04 Dual Channel, 20 GHz TDR Sampling Modules using Firmware Revision 1.3.3 or greater
- Tektronix TDS8000 Digital Sampling Oscilloscope equipped with one or two 80E04 Dual Channel, 20 GHz TDR Sampling Modules using Firmware Revision 1.3.3 or greater

If you are having problems getting PLTS to work with this equipment, the following is a basic troubleshooting procedure that should help you isolate the problem.

1. First, this procedure instructs you how to make sure the Tektronix equipment has basic operational functions.
2. Then, this procedure instructs you how to make sure your PC has basic communication functions with the Tektronix equipment.
3. Finally, this procedure instructs you how to make sure PLTS is communicating with the Tektronix equipment.

Verifying the Tektronix System is Operational

The first step is verifying that the Tektronix instrument is operational. The first part of this step is to check that the instrument's stimulus and receiver for each channel is operating. Then, the next part of this step is performing the compensation utility on the instrument and verifying the main frame and both channels of each 80E04 TDR sampling module pass.

Check each Channel's Stimulus and Receivers are Operational

Perform this procedure with nothing (no cables, connectors, or standards) connected to the TDR sampling module channel connectors.

1. Using the mouse, from the **Setup** menu, click **Display** for the *Disp* tab on the *Setups* window. With **Normal** selected, click the **Show Vectors** check box.
2. Select the **TDR** tab on the *Setups* window.
3. On **TDR** tab, for **C1**:
 - a. In the **TDR Step** area:
 - Click the **On** check box
 - Make sure the waveform is positive going
 - b. In the **ACQ** area:
 - Click the **On** check box

- Set the **Units** to volts (**V**)
- c. In the **Preset** area:
- Click the **C1** button
4. On the TDR sampling module, verify that the red **TDR** LED and the yellow **SELECT ON/OFF** LED for channel 1 (CH 1) is lit.
 5. Verify that the display shows Channel 1 with an initial step 250 mV and a subsequent step of 250 mV because of the open circuit response.
 6. Repeat for steps 3, 4, and 5 for each of the other channels to verify that each channel is operational.
 7. If the instrument does not match these results, contact your Tektronix representative.

Perform the Compensation

Perform this procedure to verify that the instrument is operating with the instrument's Compensation utility. The firmware will only allow you to start this utility after the instrument is sufficiently warmed. Typically, the longer the instrument has been powered on; the stability of the instrument is increased and results in better performance.

1. Under **Utilities** menu, select **Compensation**^o
2. Make sure that **Compensate** in the **Select Action** area is selected. Then, select **All** from the list below. Choose **Execute** button to start the compensation utility on the mainframe and of all the TDR sampling module channels.
3. When the Compensation utility has finished (after approximately five minutes), make sure that the mainframe and each of the four module channels has passed.
4. Save the compensation data by selecting **Save** in the **Select Action** area and then choosing the **Execute** button.
5. Click the **Close** button to exit the Compensation utility.
6. If the Compensation utility fails, contact your Tektronix representative.

Verifying the GPIB Communication between the PC and the Tektronix System

The next step is verifying that the PC and the Tektronix instrument have two-way communication over the GPIB. To check the GPIB communication:

1. Check the GPIB address of the Tektronix instrument:
 - a. Select **User Preferences** on the **Utilities** menu.
 - b. Select the **GPIB Configuration** tab on the *User Preferences* window.

PLTS Hardware Troubleshooting

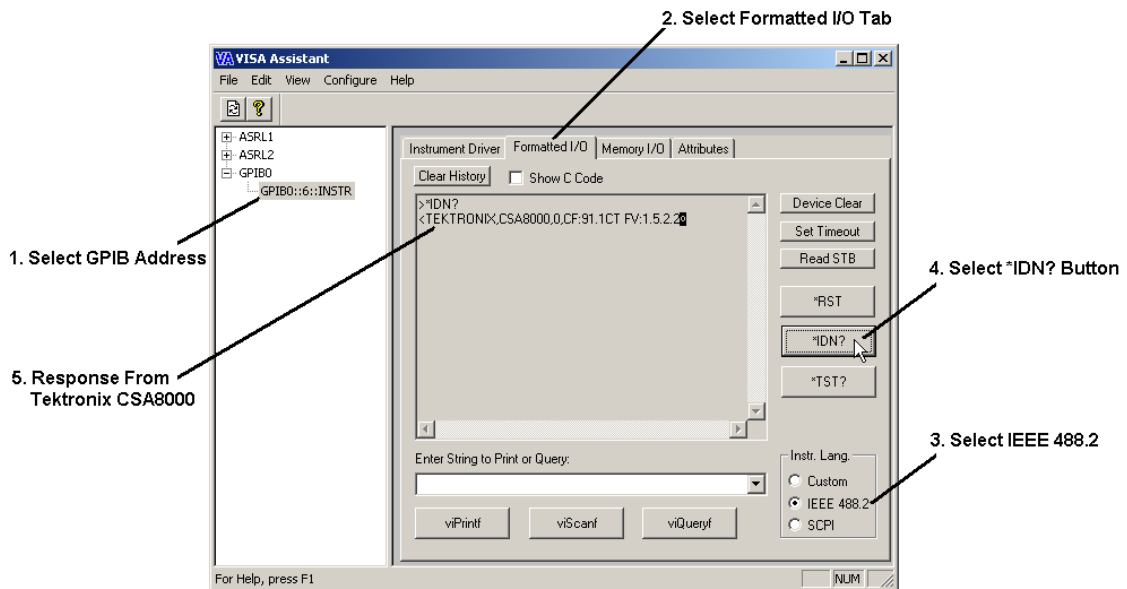
- c. Locate the address in the **GPIB Address** box.
- d. Make sure that **GPIB Talk/Listen** is selected in the **GPIB Mode** area.
2. Click the **Start** button in the lower left corner of the PC. Then select **Programs, Keysight IO Libraries, then VISA Assistant** to open the *Visa Assistant* dialog box.
3. In *Visa Assistant* dialog box, make sure the Tektronix instrument's GPIB address found in step 1 is listed the window. See [Figure 4-22](#).

Figure 4-22 Instrument GPIB Address Displayed in VISA Assistant



4. Verify the PC and the Tektronix instrument have two-way communication over the GPIB:
 - a. Select the GPIB address listed in step 3, and then select the **Formatted I/O** tab. See [Figure 4-23](#).

Figure 4-23 Tektronix CSA8000 Response to *IDN? Button



- b. Select **IEEE 488.2** in the **Inst. Lang.** area.
- c. Click the ***IDN?** button.

The PC queries the instrument at the address requesting instrument information. The Tektronix instrument should reply with a response that lists the manufacturer, the model number, and some additional information that includes the firmware version (FV).

If this response is received, two-way communication over the GPIB between the PC and the instrument is occurring.

5. If communication is not occurring, investigate your GPIB for problems.

Verifying PLTS is Operating with the Tektronix System

The first step is verifying that PLTS recognizes the Tektronix instrument. The next part is performing a basic PLTS calibration and measurement with the Tektronix instrument.

Verify PLTS Recognizes the Tektronix Instrument

Start PLTS to ensure that PLTS finds and identifies the Tektronix instrument. This section does not go into detail with each PLTS step. Locate specific PLTS information in the PLTS User's Guide.

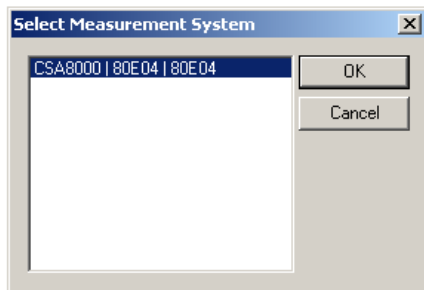
1. Start the PLTS software. PLTS scans for possible PLTS hardware on the GPIB.
 - If the Tektronix instrument is found and displayed in the *Select Measurement System* dialog

PLTS Hardware Troubleshooting

box (Figure 4-24) upon PLTS startup, skip the remaining steps and continue with “Verify the Tektronix Instrument Makes a PLTS Measurement”.

- If the Tektronix instrument is not found and displayed in the *Select Measurement System* dialog box upon PLTS startup:
 - a. From the PLTS **Tools** menu, select **Acquisition Hardware**, and then choose **Choose Data Acquisition Device**^o to display the *Select Measurement System* dialog box manually.
 - b. If the Tektronix instrument is found and displayed in the *Select Measurement System* dialog box, skip the remaining steps and continue with “Verify the Tektronix Instrument Makes a PLTS Measurement”.

Figure 4-24 **Select Measurement System Dialog Box**



2. If the Tektronix instrument is not displayed in step 1:
 - a. From the PLTS **Tools** menu, select **Acquisition Hardware**, and then choose **Scan for New Hardware** to force PLTS to re-scan for PLTS hardware on the GPIB.
 - b. After the scan is complete, from the PLTS **Tools** menu, select **Acquisition Hardware**, and then choose **Choose Data Acquisition Device**^o to display the *Select Measurement System* dialog box manually.
 - c. Check for the Tektronix instrument in the *Select Measurement System* dialog box. If it is found, continue with “Verify the Tektronix Instrument Makes a PLTS Measurement”. If it is not found, contact Keysight for assistance.

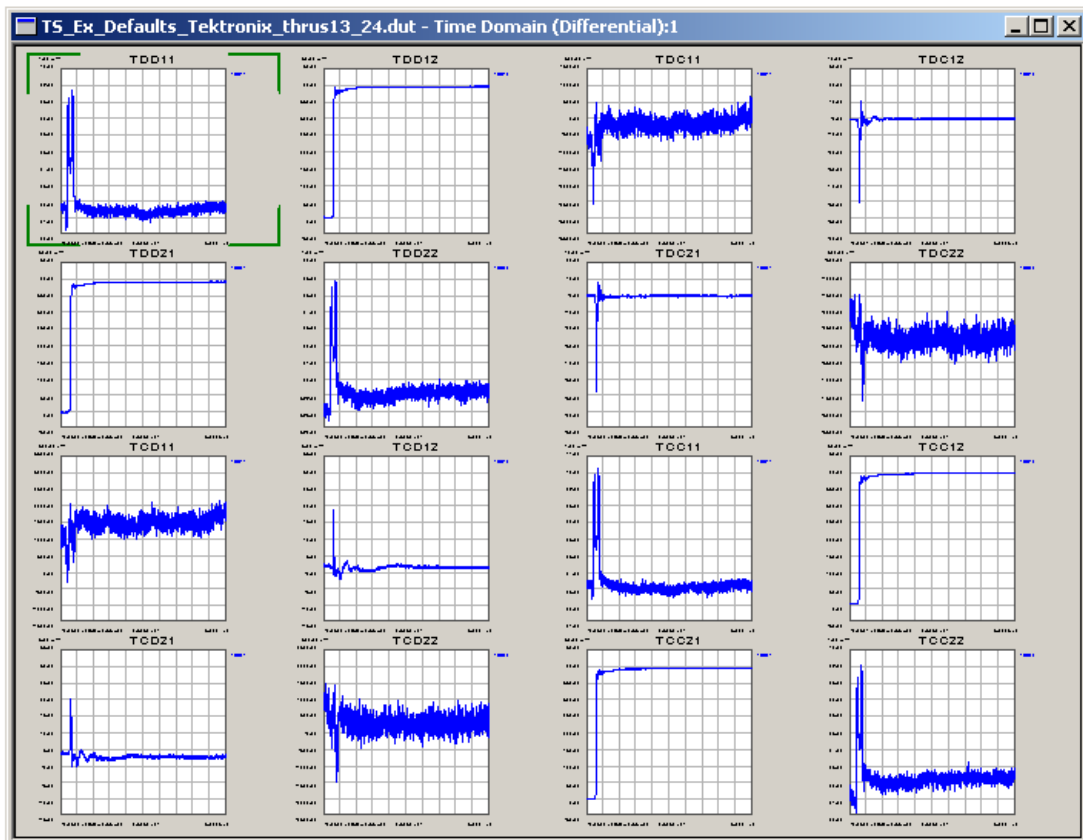
Verify the Tektronix Instrument Makes a PLTS Measurement

After PLTS has found and identified the Tektronix instrument, make a basic measurement using the following instructions. This section does not go into detail with each PLTS step. Locate specific PLTS information in the PLTS User’s Guide.

1. Select the Tektronix instrument in the *Select Measurement System* dialog box.

2. Start the PLTS measurement process. Use the default parameters for the **TDR Setup** and **Calibration and Measurement Parameters** wizard windows. Use the **Generic 3.5mm** calibration kit for the calibration.
3. For the measurement, connect a thru device between channel 1 and channel 3 and another thru device between channel 2 and channel 4.
4. Compare the Time Domain Differential results with the measurement plots shown in **Figure 4-25**. Each measurement plot has been autoscaled.

Figure 4-25 PLTS-Tektronix Measurement Example Plots



5. If your measurement results are similar to the measurement results shown above, your Tektronix instrument operates with the PLTS software. If it is not found, contact Keysight for assistance.

Contacting Keysight

Assistance with test and measurements needs and information on finding a local Keysight office are available on the Web at:

<http://www.keysight.com/find/assist>

If you do not have access to the Internet, please contact your Keysight field engineer.

Make sure have the following information readily available:

- the serial number of the test set
- a list of any options or accessories installed in or in use with the test set
- the type of GPIB board in your computer
- any information you can supply about the DUT
- the nature of the problem
- the version number of software

5 Safety and Regulatory Information

Safety Information

Safety Information

Review to the safety information in this section before operating your physical layer test system.

Safety Symbols

The following safety symbols are used throughout this manual. Familiarize yourself with each of the symbols and its meaning before operating the physical layer test system.

CAUTION Caution denotes a hazard. It calls attention to a procedure that, if not correctly performed or adhered to, would result in damage to or destruction of the instrument. Do not proceed beyond a caution note until the indicated conditions are fully understood and met.

WARNING Warning denotes a hazard. It calls attention to a procedure which, if not correctly performed or adhered to, could result in injury or loss of life. Do not proceed beyond a warning note until the indicated conditions are fully understood and met.

Instrument Markings



The instruction documentation symbol. The product is marked with this symbol when it is necessary for the user to refer to the instructions in the documentation.



The AC symbol indicates the required nature of the line module input power.



This symbol indicates separate collection for electrical and electronic equipment, mandated under EU law as of August 13, 2005. All electric and electronic equipment are required to be separated from normal waste for disposal (Reference WEEE Directive, 2002/96/EC).



This symbol indicates that the power line switch is ON.



This symbol indicates that the power line switch is in the STANDBY position.



This symbol indicates that the power line switch is in the OFF position.



This symbol is used to identify a terminal which is internally connected to the product frame or chassis.



The CE mark is a registered trademark of the European Community. (If accompanied by a year, it is when the design was proven.)



The CSA mark is a registered trademark of the CSA International.



This mark designates the product is an Industrial Scientific and Medical Group 1 Class A product (reference CISPR 11, Clause 5).



This is a marking to indicate product compliance with the Canadian Interference-Causing Equipment Standard (ICES-001).



Direct Current.



The instrument has been designed to meet the requirements of IP 2 0 for ingress and operational environment.



The RCM mark is a registered trademark of the Australian Communications and Media Authority.



Indicates the time period during which no hazardous or toxic substance elements are expected to leak or deteriorate during normal use. Forty years is the expected useful life of the product.

Safety Information



This symbol on all primary or secondary packaging indicates compliance to China standard GB 18455-2001.



South Korean Certification (KC) mark; includes the marking's identifier code which follows the format: MSIP-REM-YY-ZZZZZZZZZZZZZZ or KCC-REM-YY-ZZZZZZZZZZZZZZ.

Safety Considerations

Familiarize yourself with each of the safety considerations before operating the physical layer test system.

NOTE Positioning the Test System for Use

When setting up the physical layer test system for use, position the equipment so that the front panel power switch is easy to reach.

NOTE This instrument has been designed and tested in accordance with the standards listed on the Manufacturer's Declaration of Conformity and has been supplied in a safe condition. This instruction documentation contains information and warnings which must be followed by the user to ensure safe operation and to maintain the instrument in a safe condition.

Safety Earth Ground

WARNING **This is a Safety Class 1 product (provided with a protective earthing ground incorporated in the power cord). The mains plug shall only be inserted in a socket outlet provided with a protective earth contact. Any interruption of the protective conductor, inside or outside the instrument, is likely to make the instrument dangerous. Intentional interruption is prohibited.**

CAUTION Always use the three-prong AC power cord supplied with this product. Failure to ensure adequate earth grounding by not using this cord may cause product damage.

Safety Information

Before Applying Power

CAUTION Install the instrument so that the ON/OFF switch is readily identifiable and is easily reached by the operator. The ON/OFF switch or the detachable power cord is the instrument disconnecting device. It disconnects the mains circuits from the mains supply before other parts of the instrument. Alternately, an externally installed switch or circuit breaker (which is readily identifiable and is easily reached by the operator) may be used as a disconnecting device.

CAUTION Before switching on this instrument, make sure that the correct fuse is installed and the supply voltage is in the specified range.

Servicing

WARNING No operator serviceable parts inside. Refer servicing to qualified personnel. To prevent electrical shock, do not remove covers.

WARNING These servicing instructions are for use by qualified personnel only. To avoid electrical shock, do not perform any servicing unless you are qualified to do so.

WARNING The opening of covers or removal of parts is likely to expose dangerous voltages. Disconnect the instrument from all voltage sources while it is being opened.

WARNING The power cord is connected to internal capacitors that may remain live for 5 seconds after disconnecting the plug from its power supply.

WARNING For continued protection against fire hazard replace line fuse only with same type and rating (115V and 230V operation: T2.5A 250V). The use of other fuses or material is prohibited.

General

WARNING To prevent electrical shock, disconnect the Keysight Technologies (N4415A, N4416A, N4417A, N4418A, N4419A/B, N4420B, and N4421A/B) S-parameter test set from mains before cleaning. Use a dry cloth or one slightly dampened with water to clean the external case parts. Do not attempt to clean internally.

WARNING If this product is not used as specified, the protection provided by the equipment could be impaired. This product must be used in a normal condition (in which all means for protection are intact) only.

CAUTION This product is designed for use in Installation Category II and Pollution Degree 2 per IEC 1010 and 664 respectively.

CAUTION VENTILATION REQUIREMENTS: When installing the product in a cabinet, the convection into and out of the product must not be restricted. The ambient temperature (outside the cabinet) must be less than the maximum operating temperature of the product by 4° C for every 100 watts dissipated in the cabinet. If the total power dissipated in the cabinet is greater than 800 watts, then forced convection must be used.

Regulatory Information

The Keysight Technologies S-Parameter test system complies with the regulatory requirements listed in this section.

Compliance with Canadian EMC Requirements

This ISM device complies with Canadian ICES-001.

Cet appareil ISM est conforme a la norme NMB du Canada.

South Korean Class A EMC Declaration

This equipment is Class A suitable for professional use and is for use in electromagnetic environments outside of the home.

A 급 기기 (업무용 방송통신기자재) 이 기기는 업무용 (A 급) 전자과적합기기로서 판매자 또는 사용자는 이 점을 주의하시기 바라 며 , 가정외의 지역에서 사용하는 것을 목적으로 합니다 .

Compliance with German Noise Requirements

This is to declare that this instrument is in conformance with the German Regulation on Noise Declaration for Machines (Laermangabe nach der Maschinenlaermrerordnung –3. GSGV Deutschland).

Acoustic Noise Emission/Geraeuschemission	
LpA <70 dB	LpA <70 dB
Operator position	am Arbeitsplatz
Normal position	normaler Betrieb
per ISO 7779	nach DIN 45635 t. 19

Declaration of Conformity

A Declaration of Conformity is on file for the N1900 Series models, and a copy is available upon request.

Symbols

.NET Framework, 43

Numerics

50 ohm cable option, 6

A

ac power, 30, 40
 cord, 5
 frequency range, 30
AC symbol, 91
accessories, 5
acoustic noise emission, 96
address switch, 26, 39
address, GPIB, 26, 39
adjustment, IF gain, 31
altitude, 30
analyzer setup, 7
Australian Spectrum Management Agency, 91

B

balanced transmission line pc board, 5
before applying power safety considerations,
 94
bench top installation, 12
bias fuse, 81

C

cable
 option, 6
cables, 17
 semirigid interconnect, 5
calibration
 kit, 6
Canadian
 EMC requirements, 96
 Interference-Causing Equipment Standard
 symbol, 91
 Standards Association symbol, 91
cautions
 before applying power, 94
 definition, 90
 general, 95
 safety earth ground, 93
 servicing, 94
CD-ROM, 3, 36
CE symbol, 91
compatible network analyzer options, 7
compliance with

 Canadian EMC requirements, 96
 German noise requirements, 96
computer requirements, 3, 36
conformity, declaration of, 96
cord, ac power, 5
CSA symbol, 91
C-Tick mark, 91

D

damage from shipment, 4, 37
declaration of conformity, 96
device under test
 sample, 5
documentation
 optional, iv
 standard, iv

E

earth ground wire, 64
ECal
 kit option, 6
electrostatic discharge. See ESD
EMC requirements, Canadian, 96
environment, operating, 30
equipment installation
 TDR-based, 33–40
 VNA-based, 1–31
equipment rack installation, 13
ESD
 precautions, 64
 supplies, 64
European Community symbol, 91

F

fixed (node-locked) license, 46, 47–50
flange kit, 13
floor mat, static-control, 64
frequency
 range, 4

G

gain, IF, 31
general safety considerations, 95
Geraeuschemission, 96
German noise requirements, 96
GPIB, 3, 36
 address, 26, 39, 81
 address switch, 26, 39
 card, 3, 36
ground wire, 64

H

handle kit, 13
handles, 5, 6
hardware, 61
heel straps, ESD, 64
humidity, 30

I

ICES-001, 96
icon, software, 59
identifying, 61
identifying hardware, 61
IF gain, 31
incompatible network analyzer options, 7
Industrial Scientific and Medical Group 1 Class
 A product, 91
input voltage, 30
installation
 bench top, 12
 equipment rack, 13
 software, 41–61
 TDR-based, 33–40
 VNA-based, 1–31
instrument documentation symbol, 91
instrument markings, 91
interconnect cables, 5
interconnections, 17–25
IO Libraries, 43
ISM1-A symbol, 91

L

license
 fixed (node-locked), 46, 47–50
 networkable (floating), 46, 50–56
 specify type, 59
 transportable (USB key), 46, 57–58
line fuse, 81
load
 termination, 81

M

main memory, 3, 36
markings, 91
mat, floor, static-control, 64
mat, table, static-control, 64
memory, main, 3, 36
memory, virtual, 3, 36
model number
 network analyzer, 4
 test set, 4

N

N1953A interconnections, 24
N1953B interconnections, 24
N1955B interconnections, 22
N1957A interconnections, 20
N1957B interconnections, 20
network analyzer
 options, 4
 setup, 7
networkable (floating) license, 46, 50–56
noise emission, acoustic, 96
noise requirements, German, 96

O

off symbol, 91
on symbol, 91
operating environment, 30
option
 060, 6
 1CP, 6
 B20, 6
options, 6
 network analyzer, 4, 7

P

pc board
 sample balanced transmission line, 5
PC requirements, 3, 36
Pentium, 3, 36
power cord, 5
power source requirements, 30
Programmer's Toolkit, 43

R

rack mount option, 6
rail set, 13
RAM, 3, 36
requirements, computer, 3, 36
resolution
 screen, 3, 36
RF power, 81
ripple, 81
run the software, 59

S

safety considerations, 93–95
 before applying power, 94
 general, 95
 safety earth ground, 93
 servicing, 94

- safety earth ground safety considerations, 93
- safety symbols, 90
- sample device under test, 5
- sample pc board, 5
- scanning, 61
- screen resolution, 3, 36
- semirigid interconnect, 17
- semirigid interconnect cables, 5, 17
- servicing safety considerations, 94
- shipment damage, 4, 37
- software
 - CD-ROM, 43
 - icon, 59
 - licence, 46
- software installation, 41–61
- start the software, 59
- static-safe workstation, 64
- switch
 - GPIO address, 26, 39
- symbols, 91
- system
 - configurations, 4
 - interconnections, 17–25
 - weight, 4, 37

T

- table mat, static-control, 64
- TDR
 - setup, 37
- TDR setup, 37
- TDR-based installation, 33–40
- temperature requirements, 30
- torque, interconnect cable, 17
- transportable (USB key) license, 46, 57–58

U

- unpacking the system, 4, 37

V

- ventilation requirements, 11, 95
- virtual memory, 3, 36
- VNA-based
 - equipment installation, 1–31
- VNA-based PLTS interconnections, 17–25
- voltage requirements, 30

W

- warnings
 - before applying power, 94
 - definition, 90

- general, 95
- safety earth ground, 93
- servicing, 94
- weight, 4, 37
- Windows, 3, 36
- workstation, static-safe, 64
- wrist strap, ESD, 64

This information is subject to change without notice.

© Keysight Technologies 2009 - 2015

February 2015



N1930-90020

www.keysight.com